

Board of Commissioners

75 Langley Drive • Lawrenceville, GA 30046-6935
770.822.7000 • www.gwinnettcounty.com

Charlotte J. Nash, Chairman
Jace W. Brooks, District 1
Lynette Howard, District 2
Tommy Hunter, District 3
John Heard, District 4



Official

Informal Briefing Minutes
Tuesday, March 20, 2018 - 10:30 AM

Present: Charlotte J. Nash, Jace Brooks, Lynette Howard, Tommy Hunter, John Heard

I. Planning & Development

Gwinnett 2040 Unified Plan

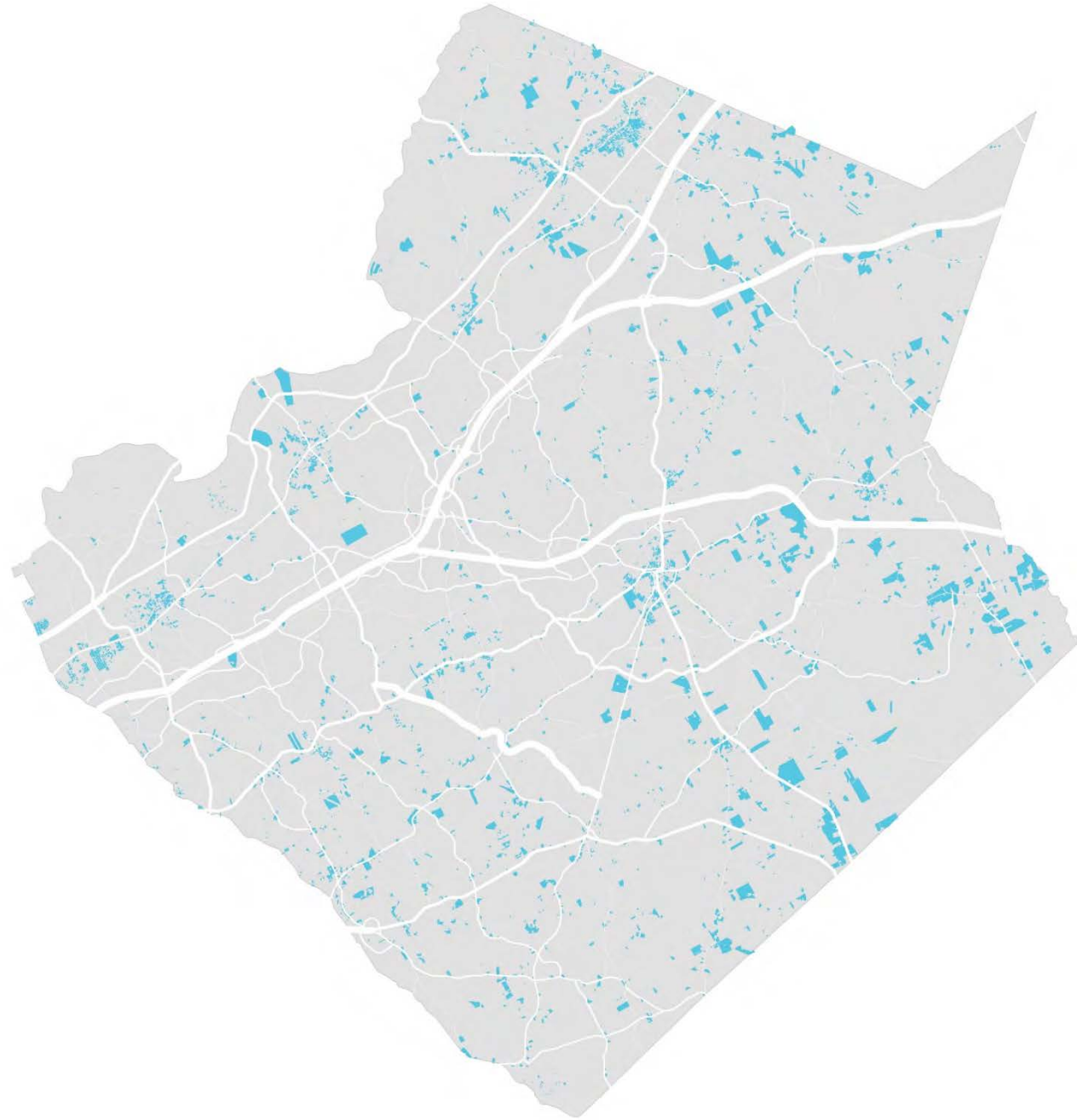
Eric Lusher and Lauren Blaszyk of Pond and Company and Inga Kennedy of PEQ, Inc. provided the Board with an overview of the planning stages for the Gwinnett 2040 Unified Plan. No Official Action Taken.

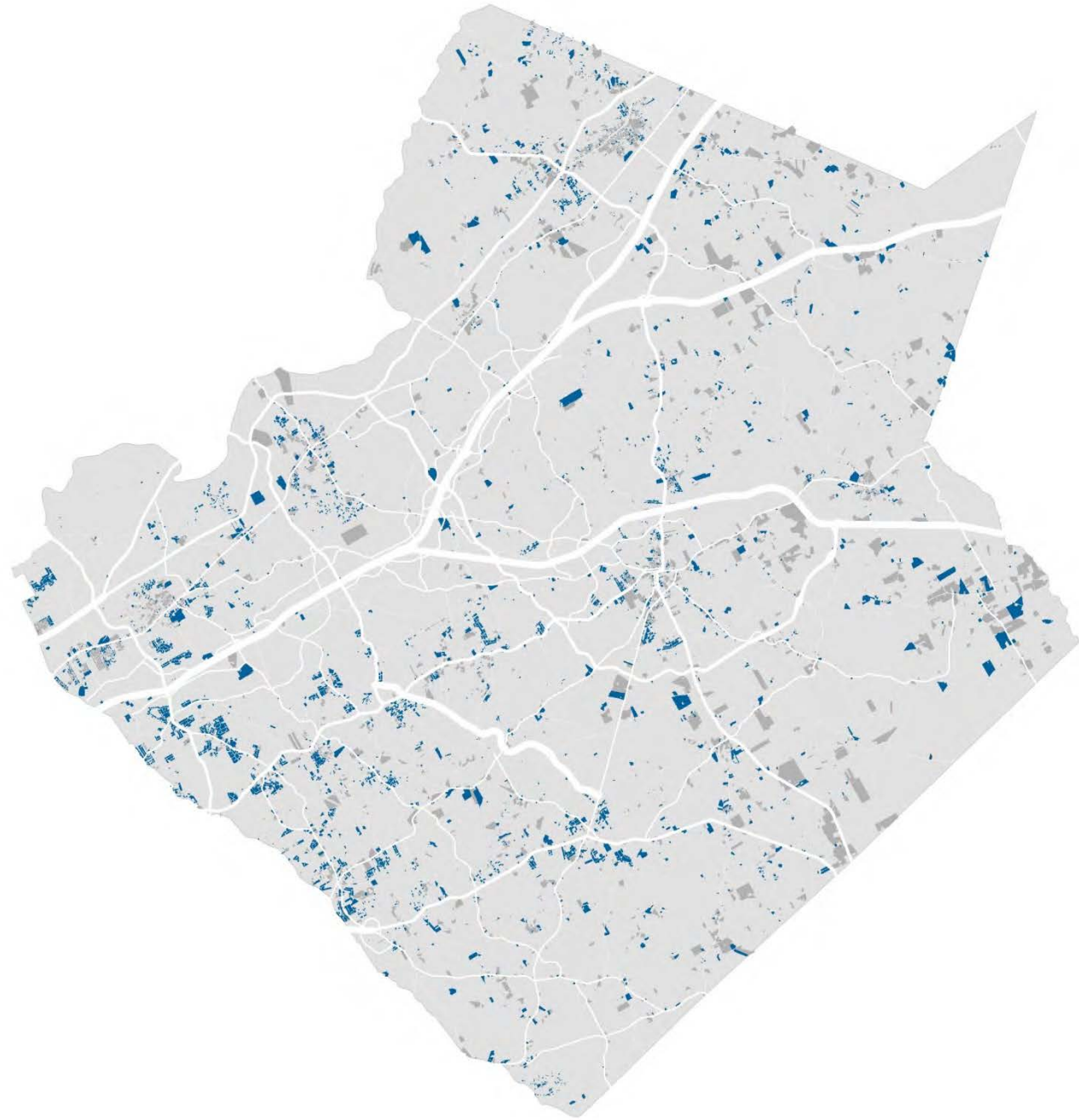


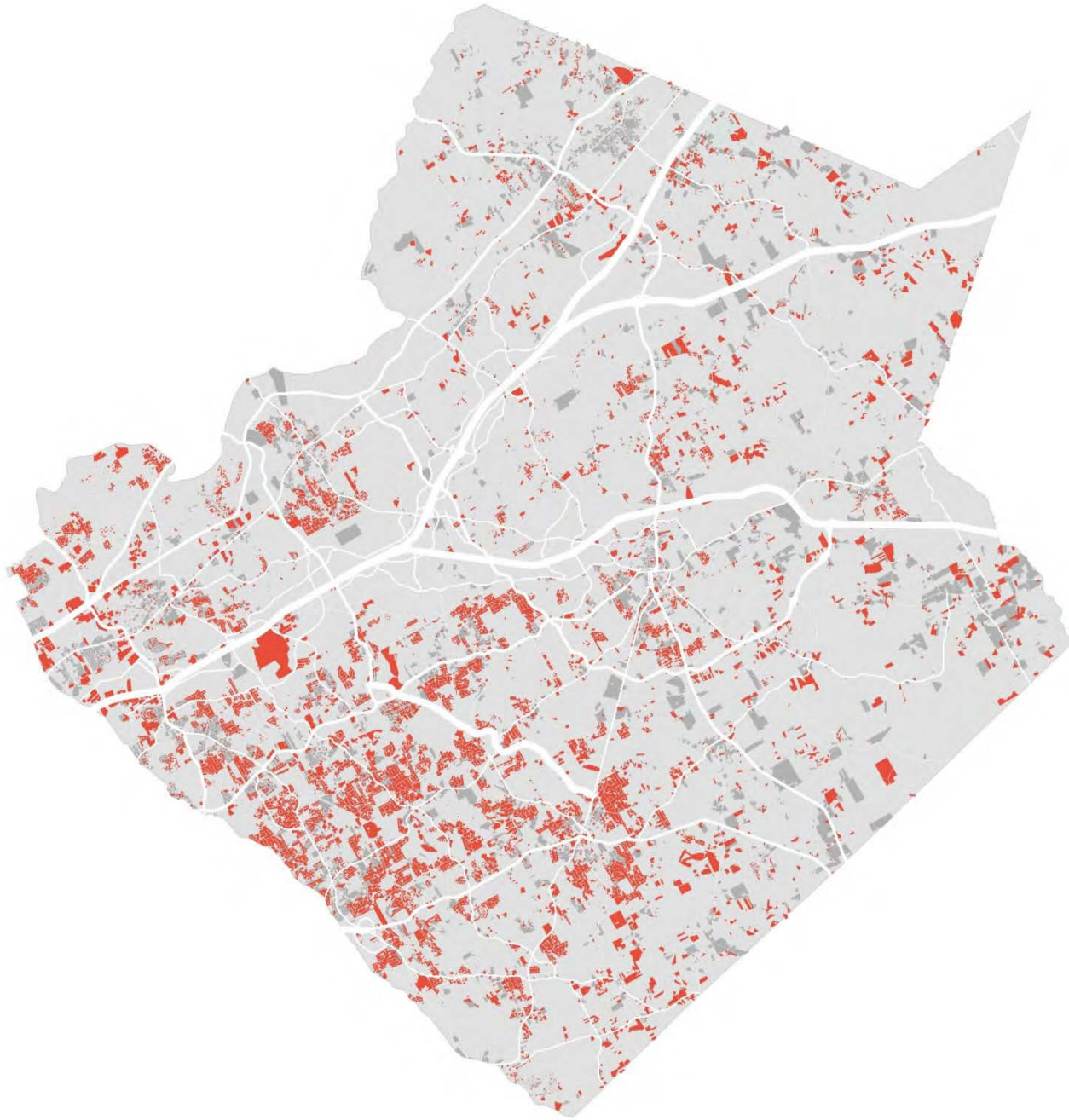
Gwinnett 2040

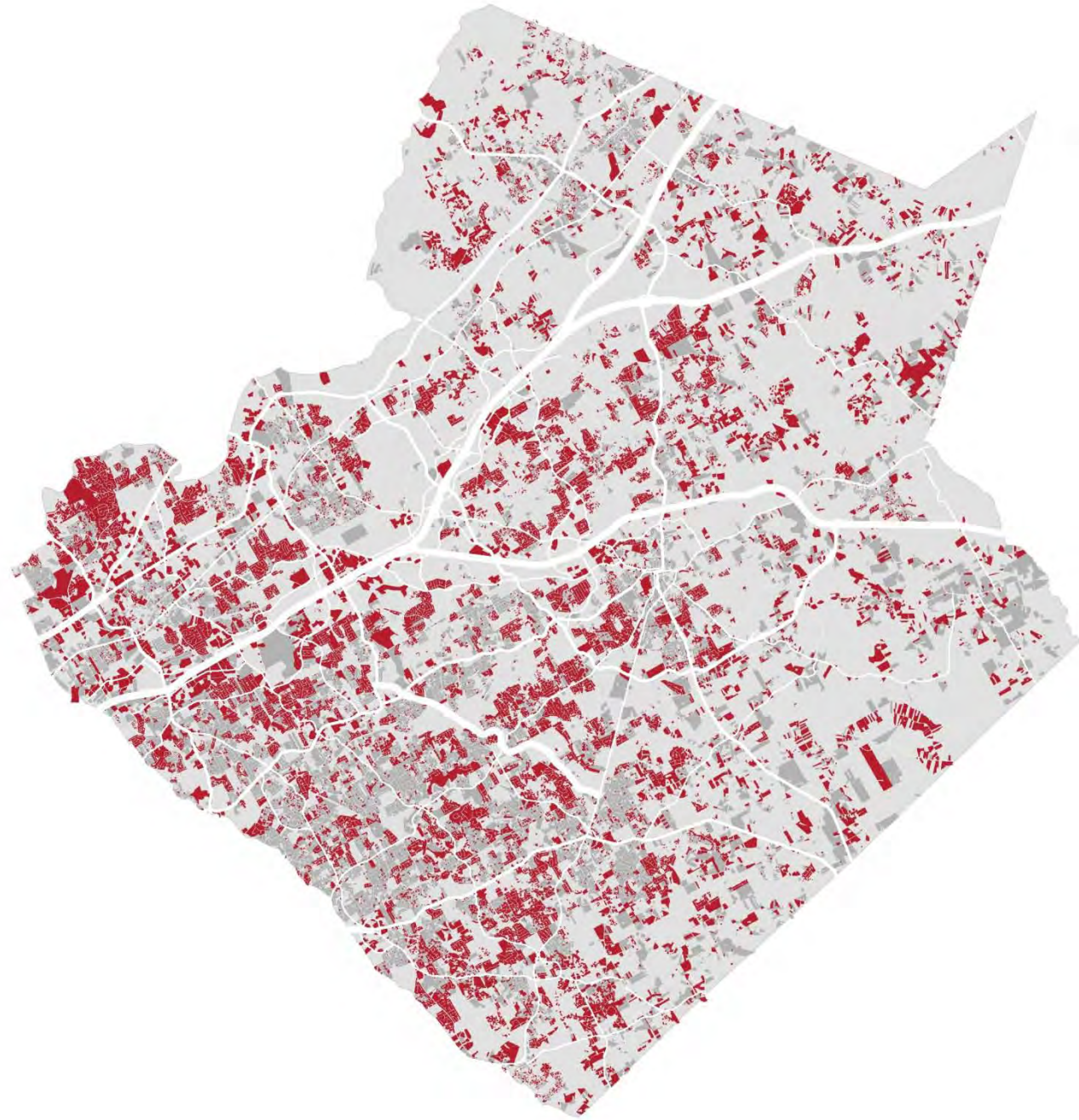
UNIFIED PLAN

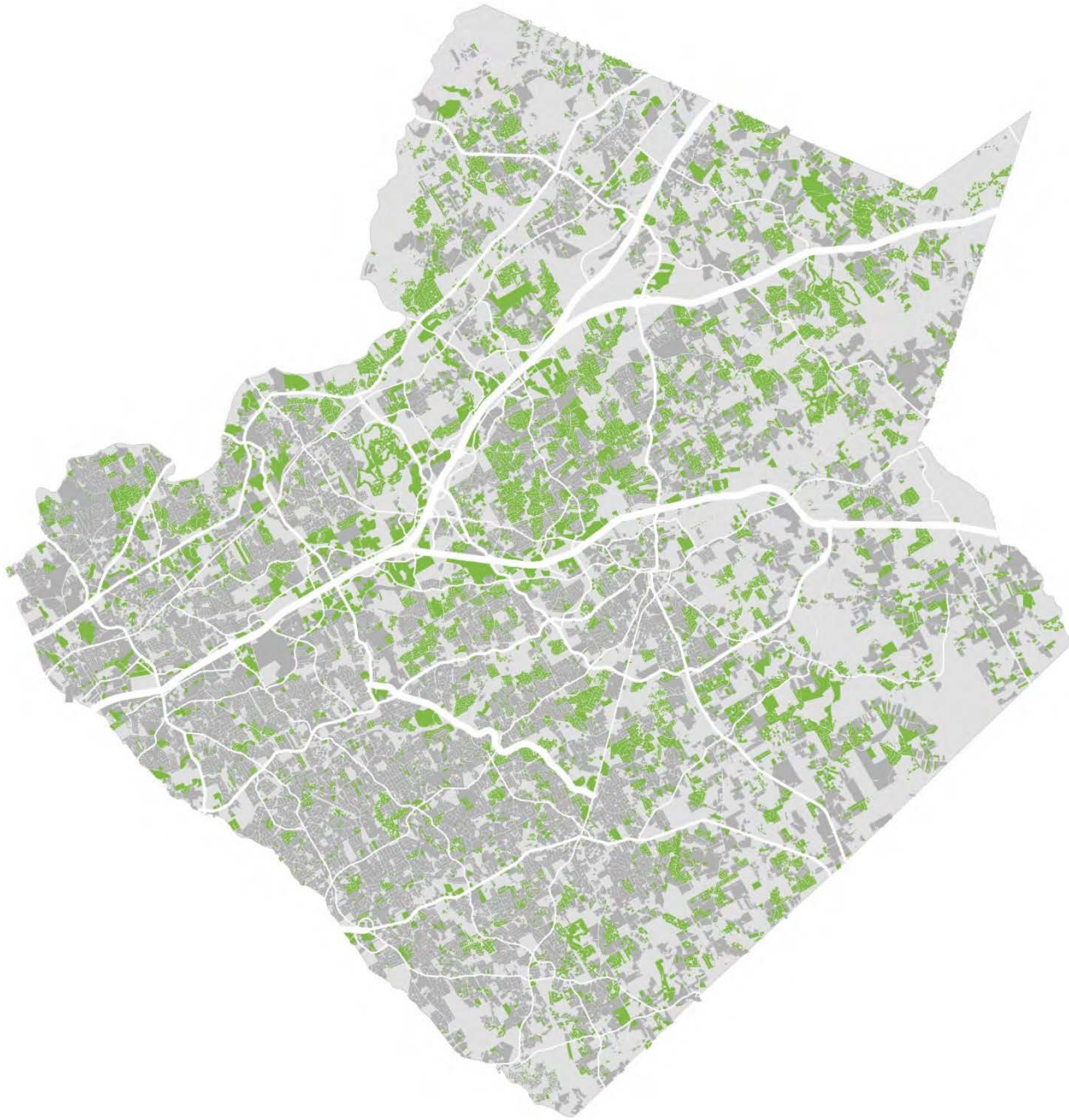
Briefing to Board of Commissioners
March 20, 2018

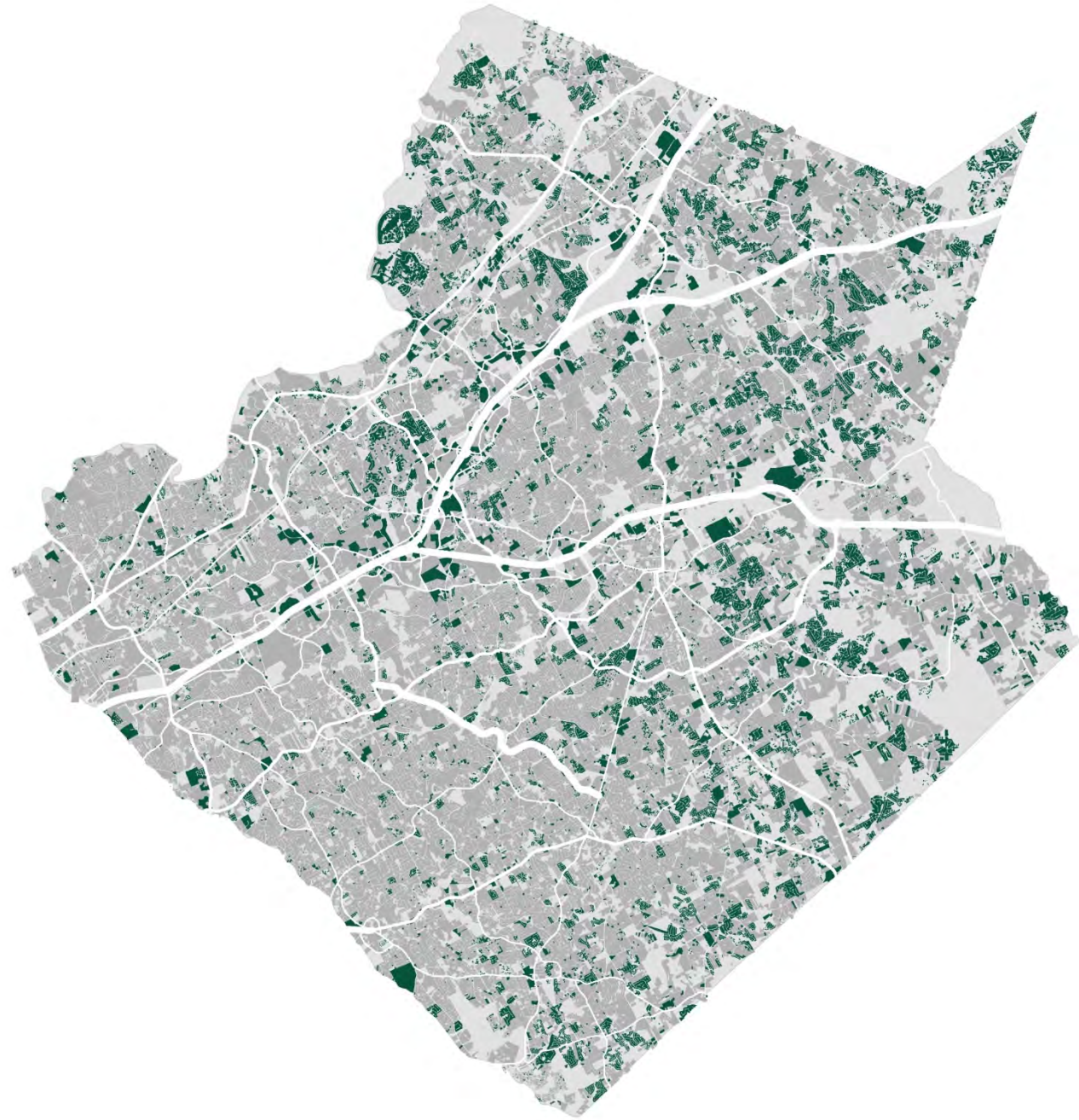






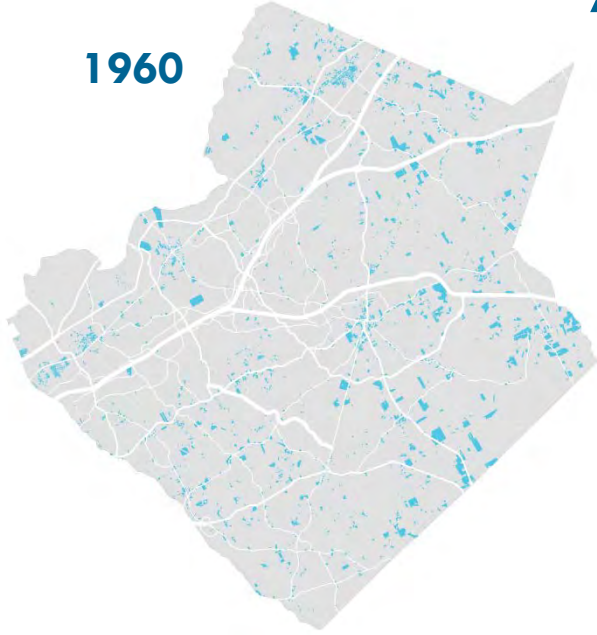




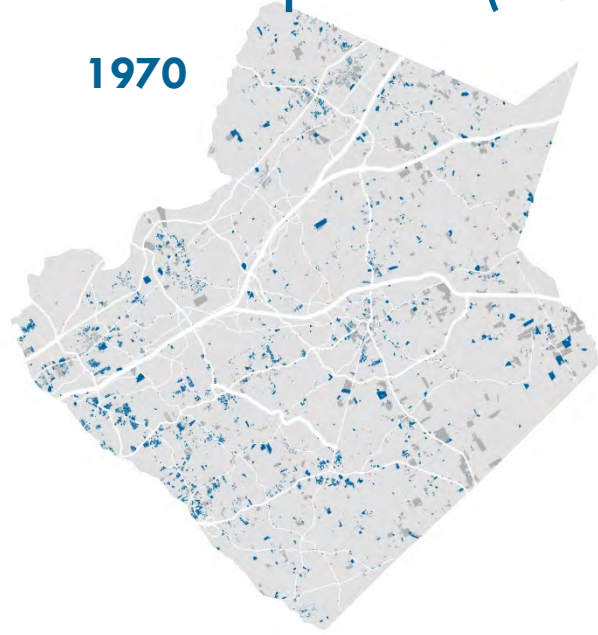


History of Development (1960-2010)

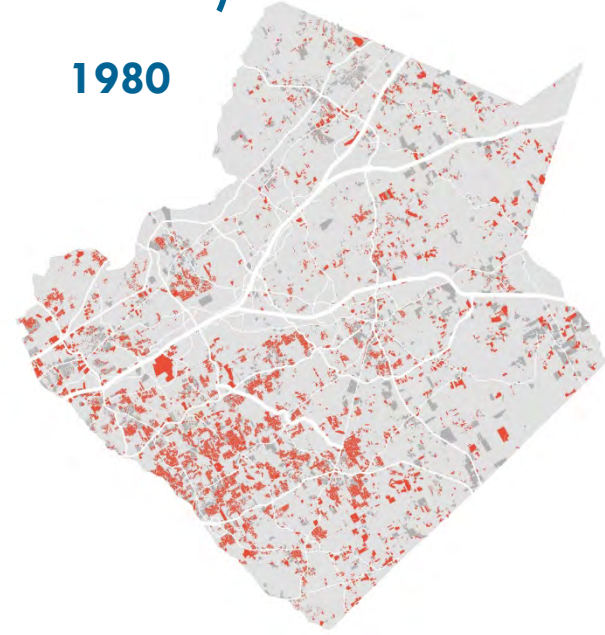
1960



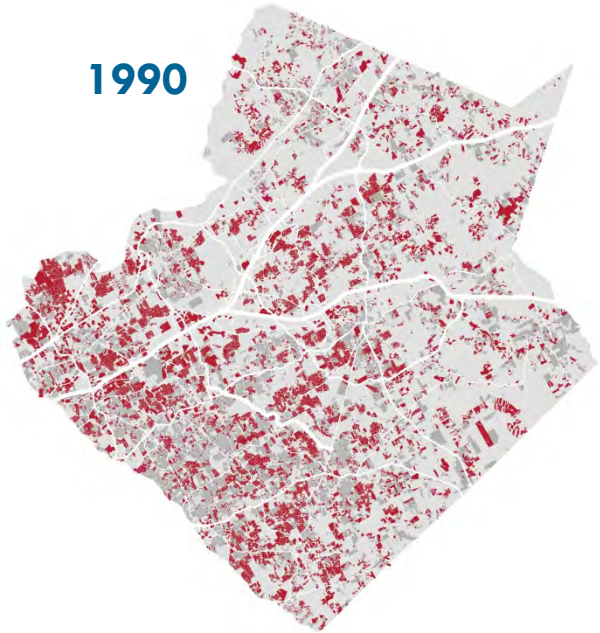
1970



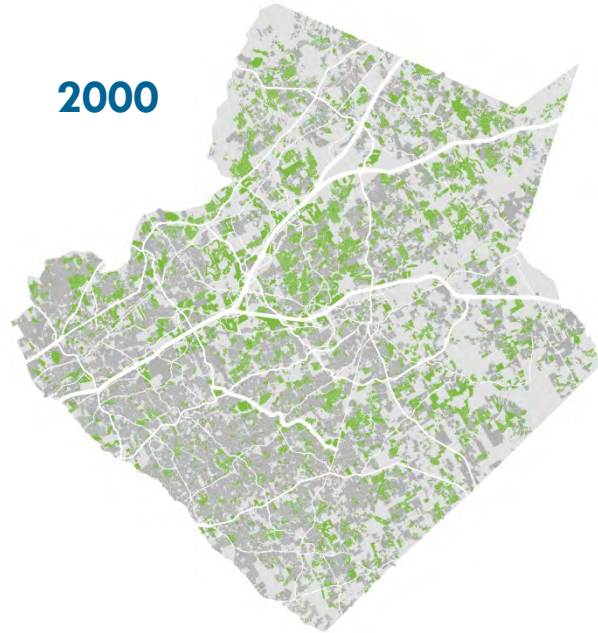
1980



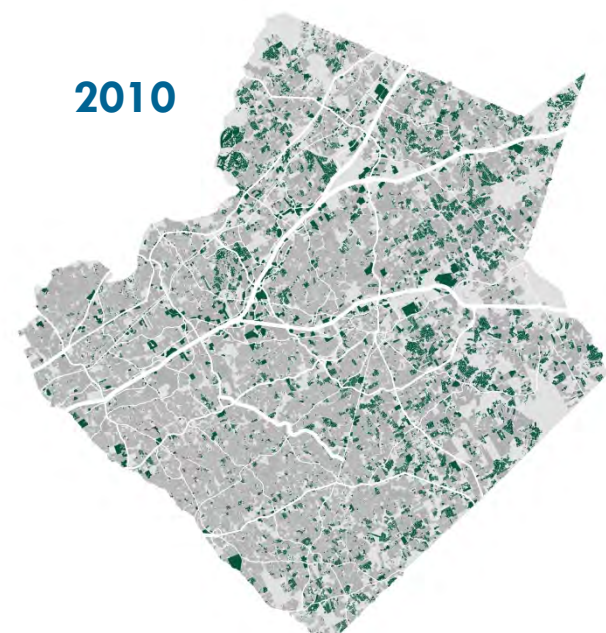
1990



2000



2010



2040



This plan is
fundamentally about
what the County will be
22 years from now.

How do we get there?

This plan is
fundamentally about
what the County will be
22 years from now.

How do we get there?

How do

 transportation

 economic development

 housing

 land use

work together?

winter 2018

spring 2018

summer 2018

fall 2018

winter 2019

step one
research

step two
vision

step three
develop

step four
document

step five
adopt

winter 2018



spring 2018

summer 2018

fall 2018

winter 2019

step one
research

step two
vision

step three
develop

step four
document

step five
adopt

step one

research



Data

- demographics
- employment
- attitude & values

demographics

Each dot represents approximately 50 people

1960 and 1970

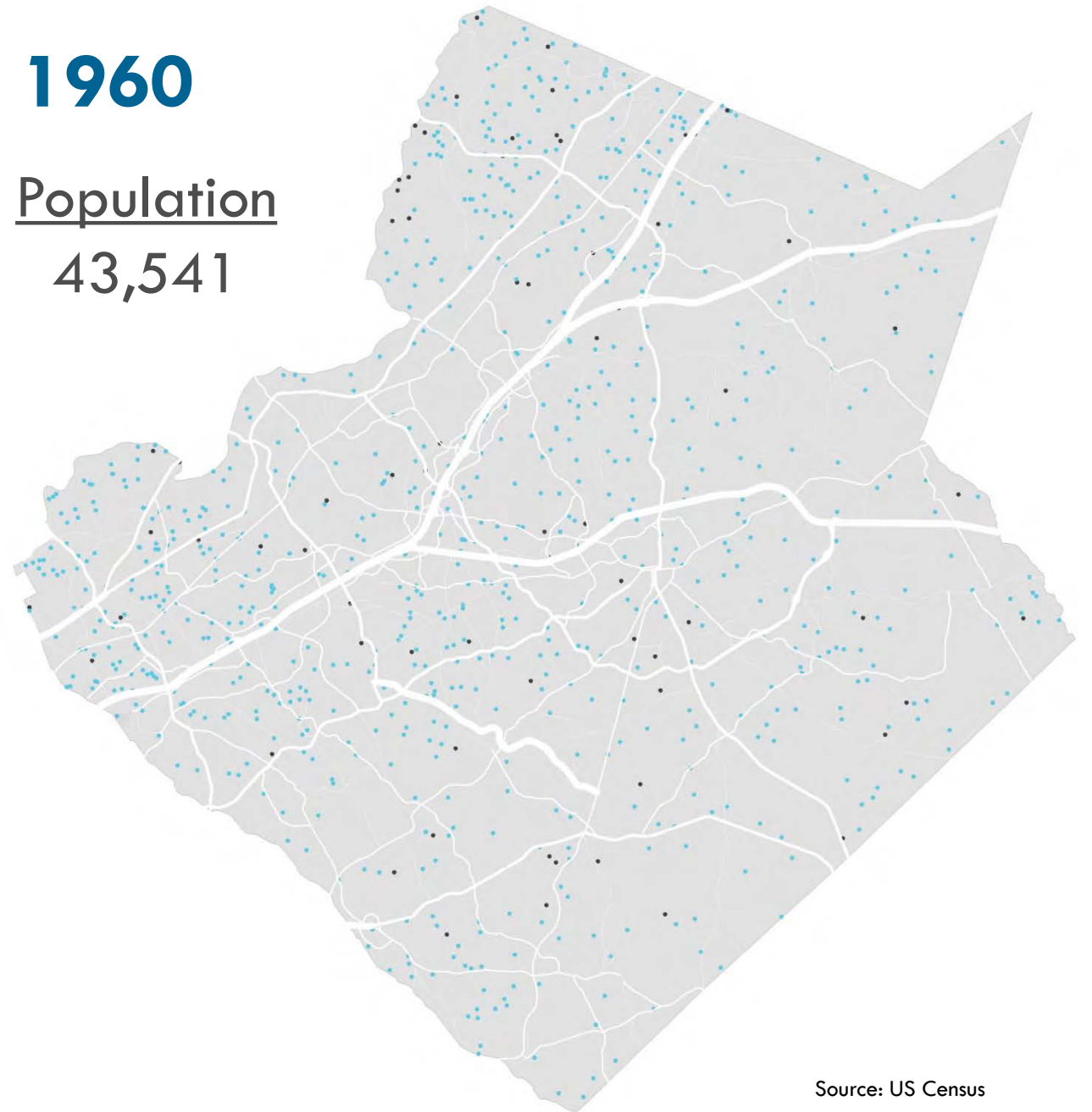
- White
- Non-White

1980 - 2010

- White, Non-Hispanic
- Black/African-American, Non-Hispanic
- Asian, Non-Hispanic
- Other/Multiple Races, Non-Hispanic
- Hispanic, All Races

1960

Population
43,541



Source: US Census

demographics

Each dot represents approximately 50 people

1960 and 1970

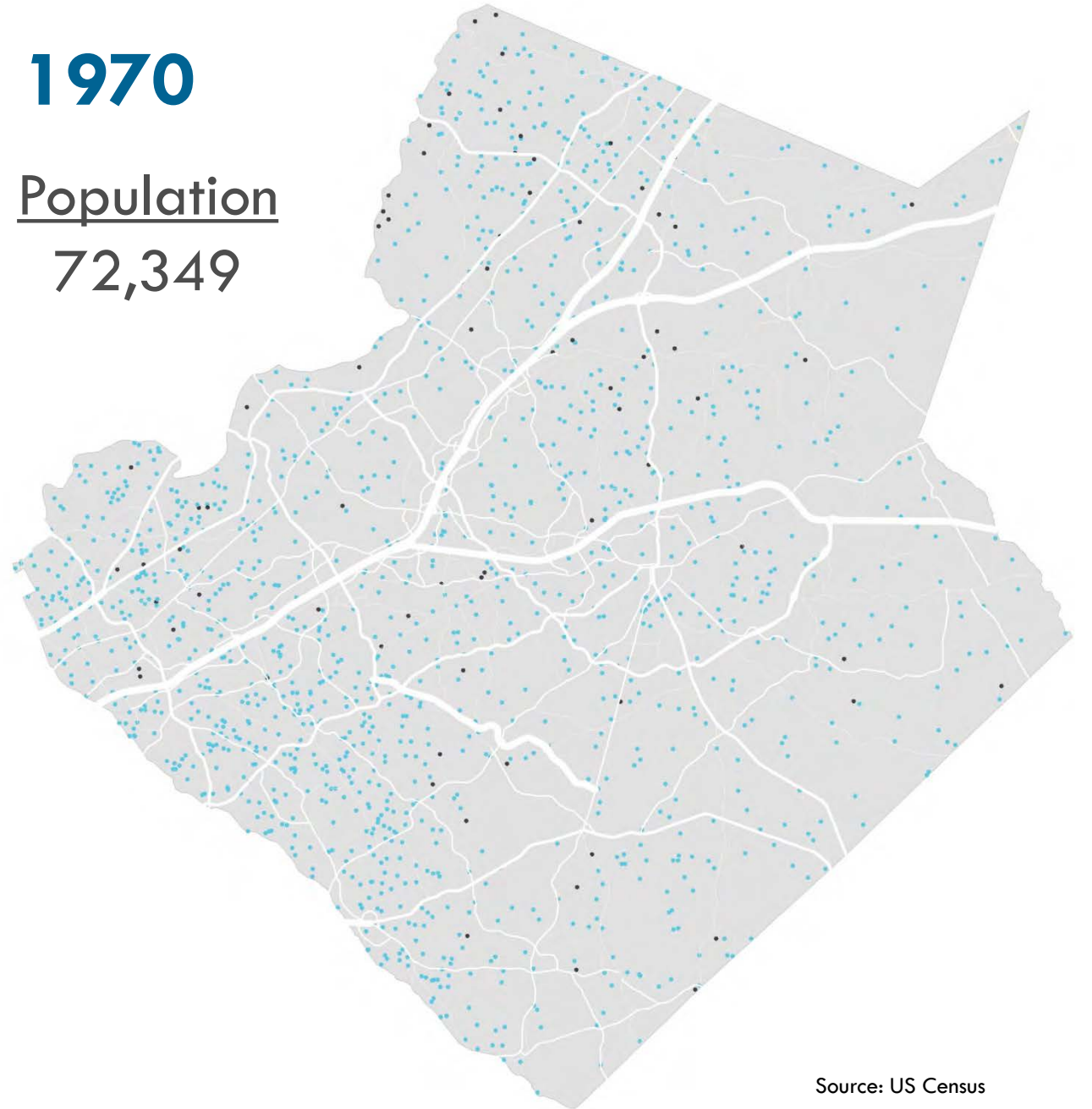
- White
- Non-White

1980 - 2010

- White, Non-Hispanic
- Black/African-American, Non-Hispanic
- Asian, Non-Hispanic
- Other/Multiple Races, Non-Hispanic
- Hispanic, All Races

1970

Population
72,349



Source: US Census

demographics

Each dot represents approximately 50 people

1960 and 1970

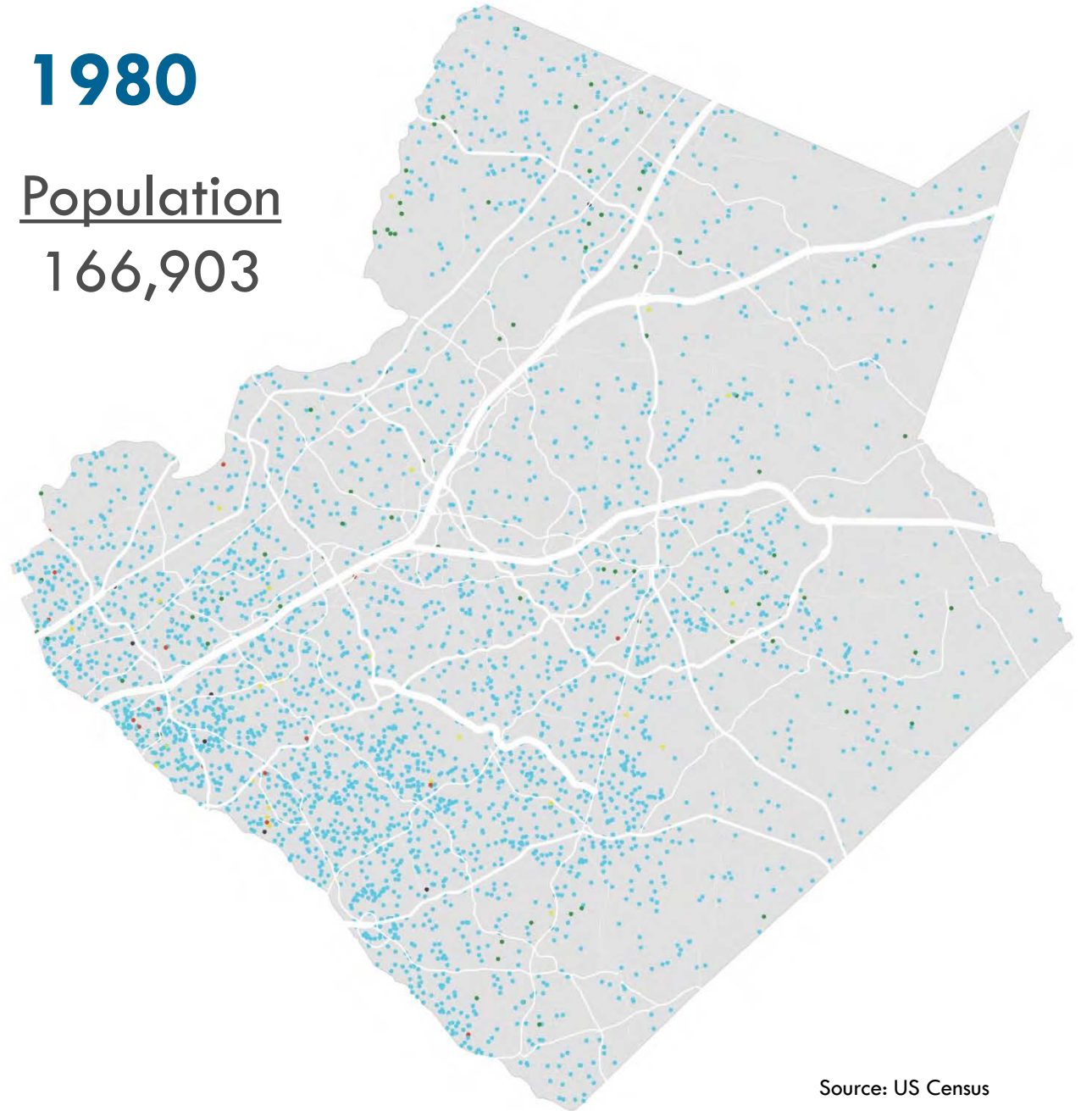
- White
- Non-White

1980 - 2010

- White, Non-Hispanic
- Black/African-American, Non-Hispanic
- Asian, Non-Hispanic
- Other/Multiple Races, Non-Hispanic
- Hispanic, All Races

1980

Population
166,903



Source: US Census

demographics

Each dot represents approximately 50 people

1960 and 1970

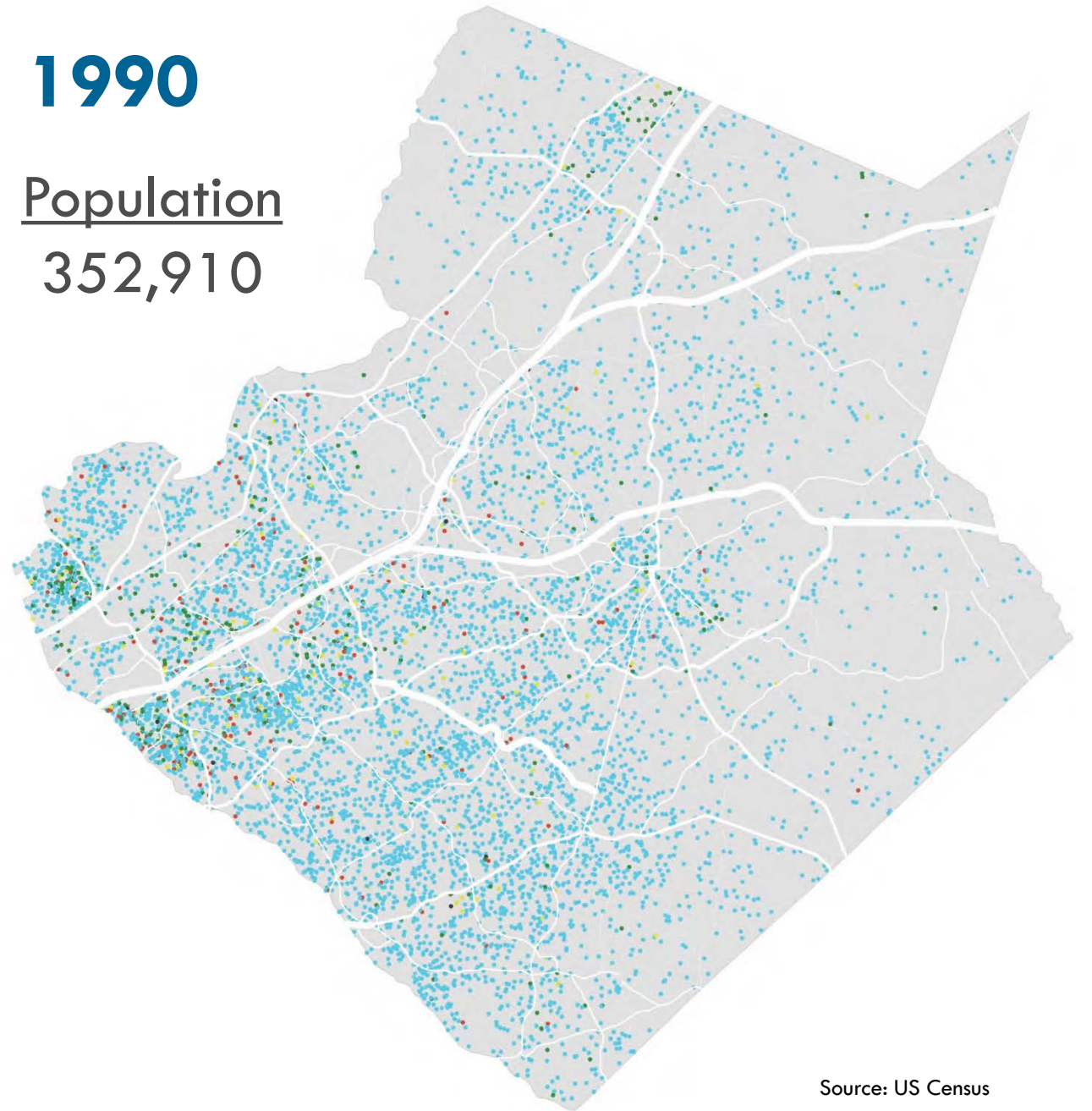
- White
- Non-White

1980 - 2010

- White, Non-Hispanic
- Black/African-American, Non-Hispanic
- Asian, Non-Hispanic
- Other/Multiple Races, Non-Hispanic
- Hispanic, All Races

1990

Population
352,910



Source: US Census

demographics

Each dot represents approximately 50 people

1960 and 1970

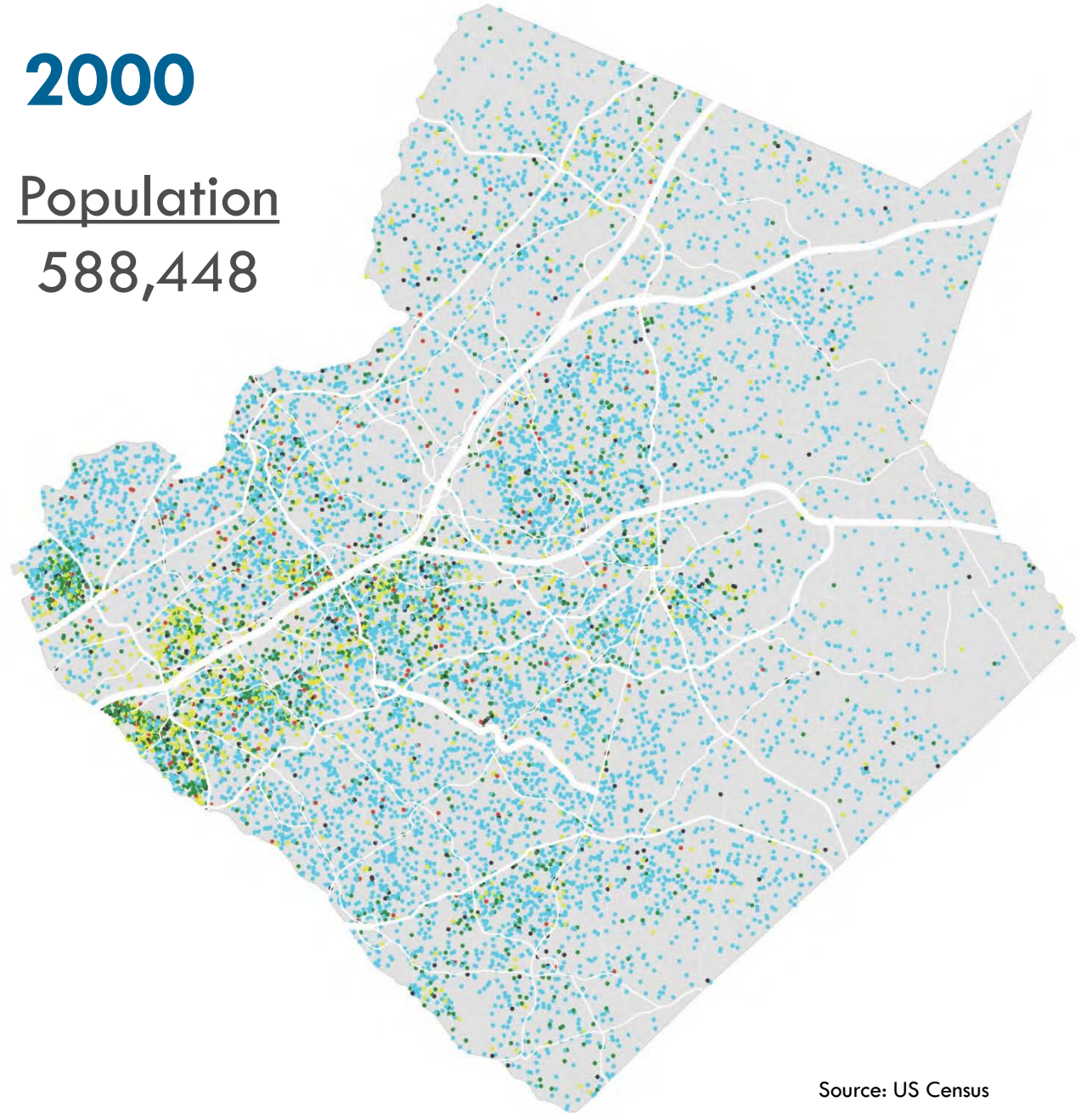
- White
- Non-White

1980 - 2010

- White, Non-Hispanic
- Black/African-American, Non-Hispanic
- Asian, Non-Hispanic
- Other/Multiple Races, Non-Hispanic
- Hispanic, All Races

2000

Population
588,448



Source: US Census

demographics

Each dot represents approximately 50 people

1960 and 1970

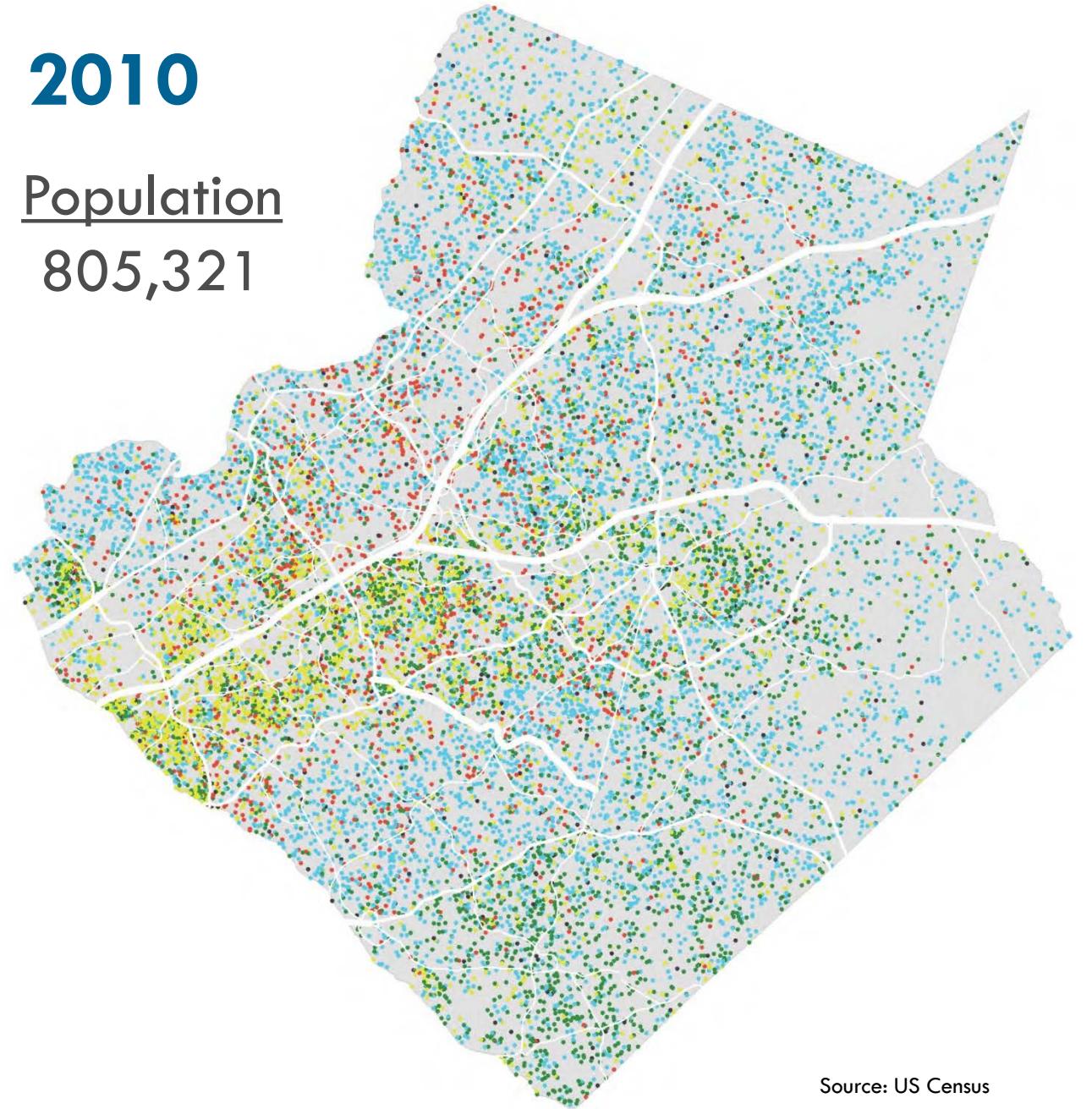
- White
- Non-White

1980 - 2010

- White, Non-Hispanic
- Black/African-American, Non-Hispanic
- Asian, Non-Hispanic
- Other/Multiple Races, Non-Hispanic
- Hispanic, All Races

2010

Population
805,321

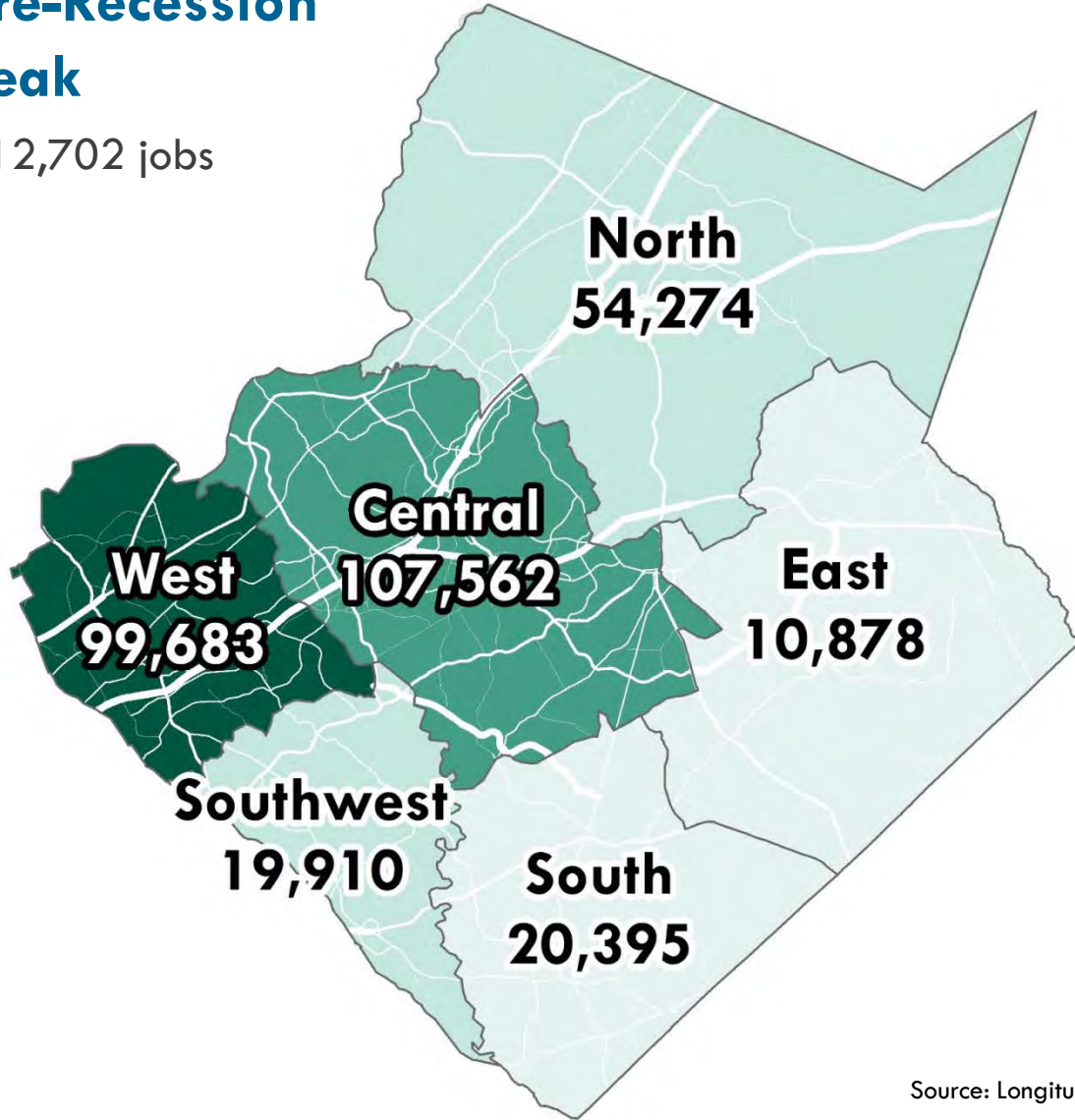


Source: US Census

employment

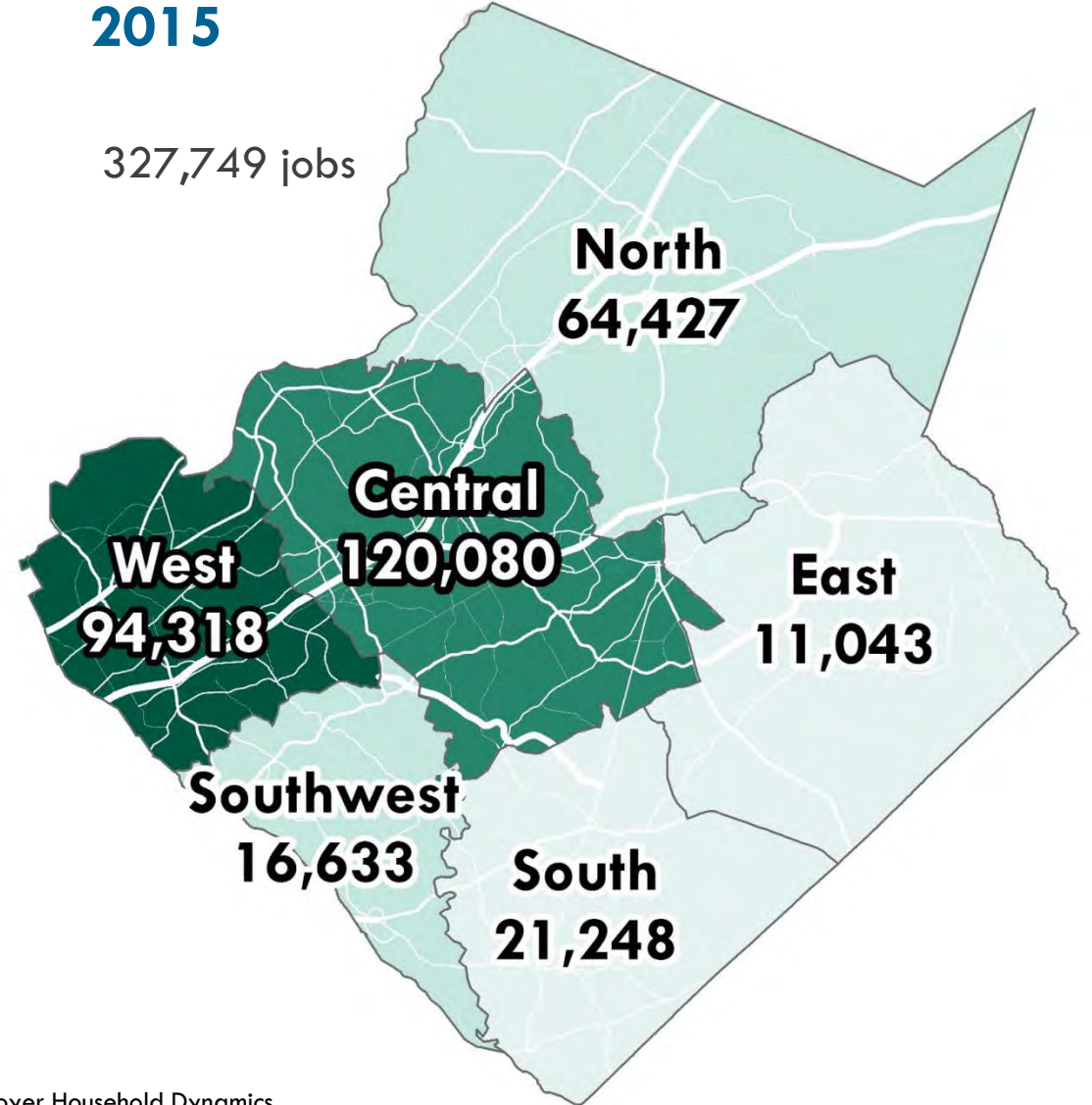
Pre-Recession Peak

312,702 jobs



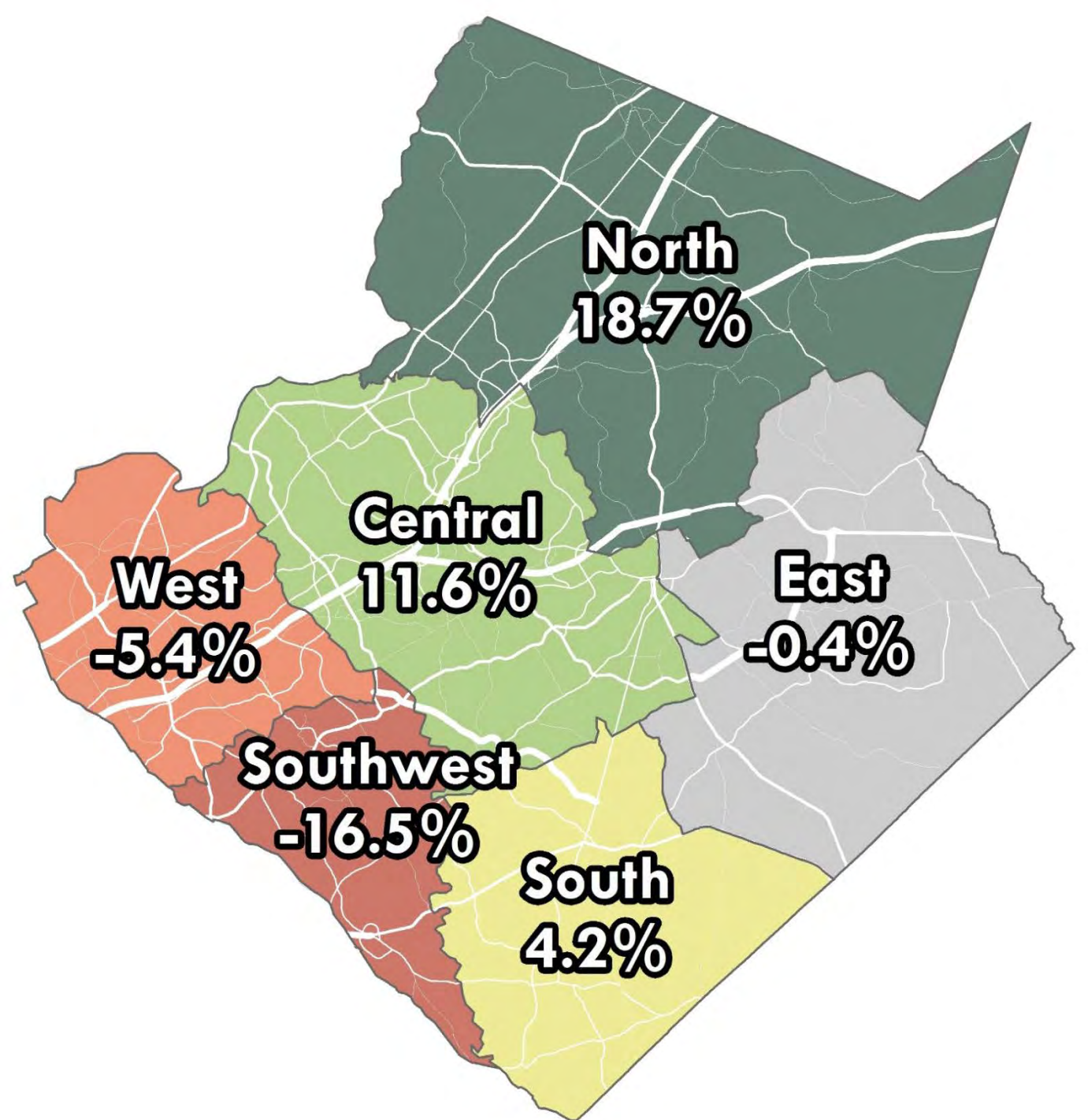
2015

327,749 jobs

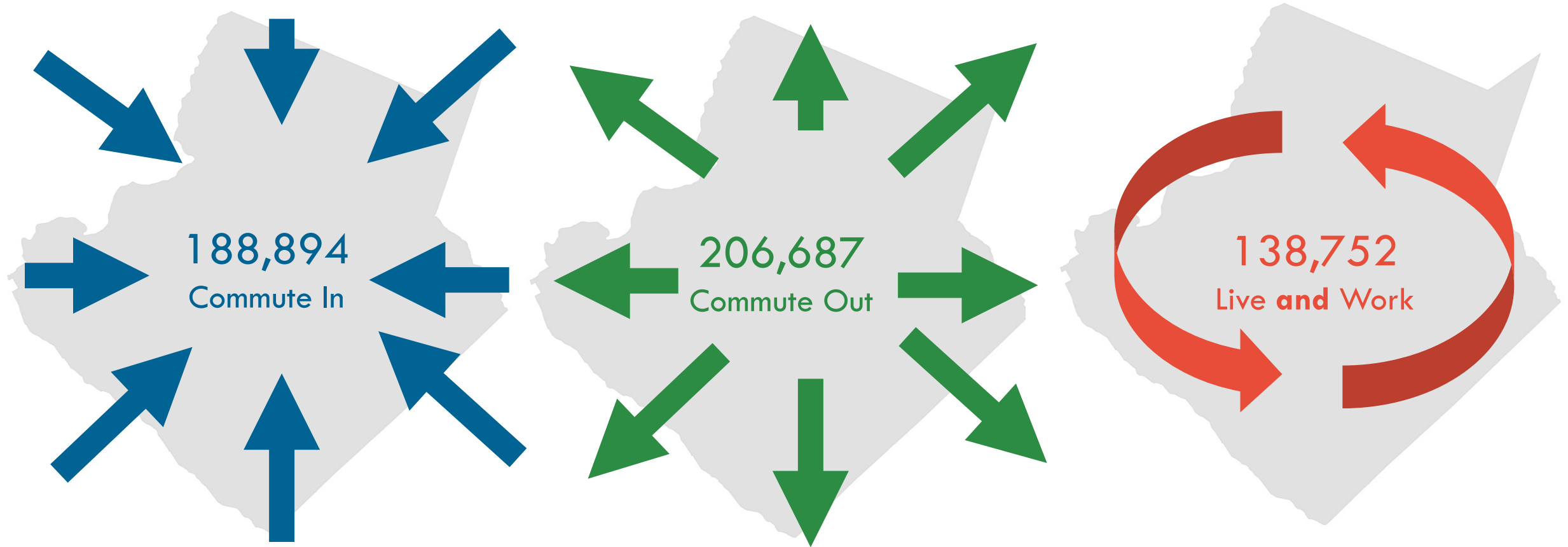


employment

**Employment Change
Compared to Peak
Pre-Recession
Employment**



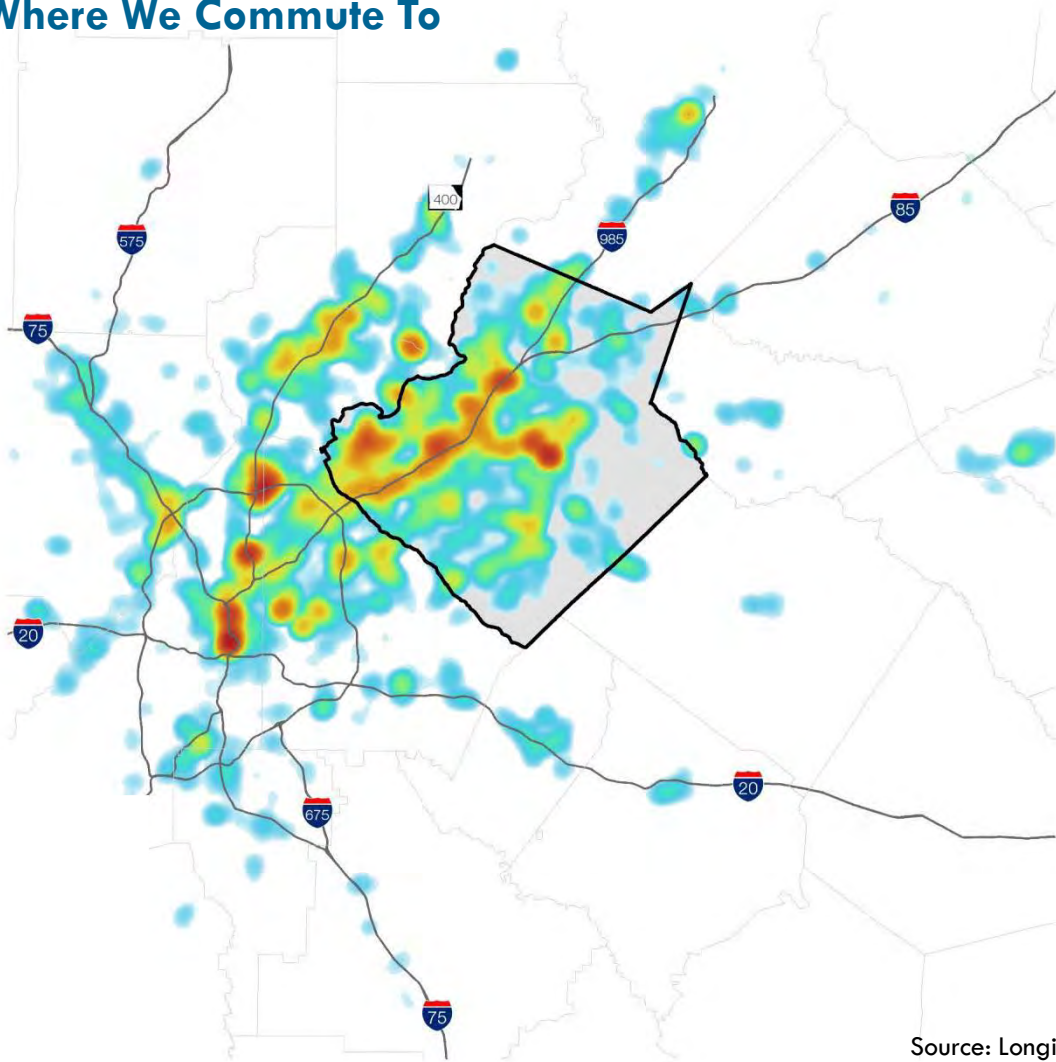
employment



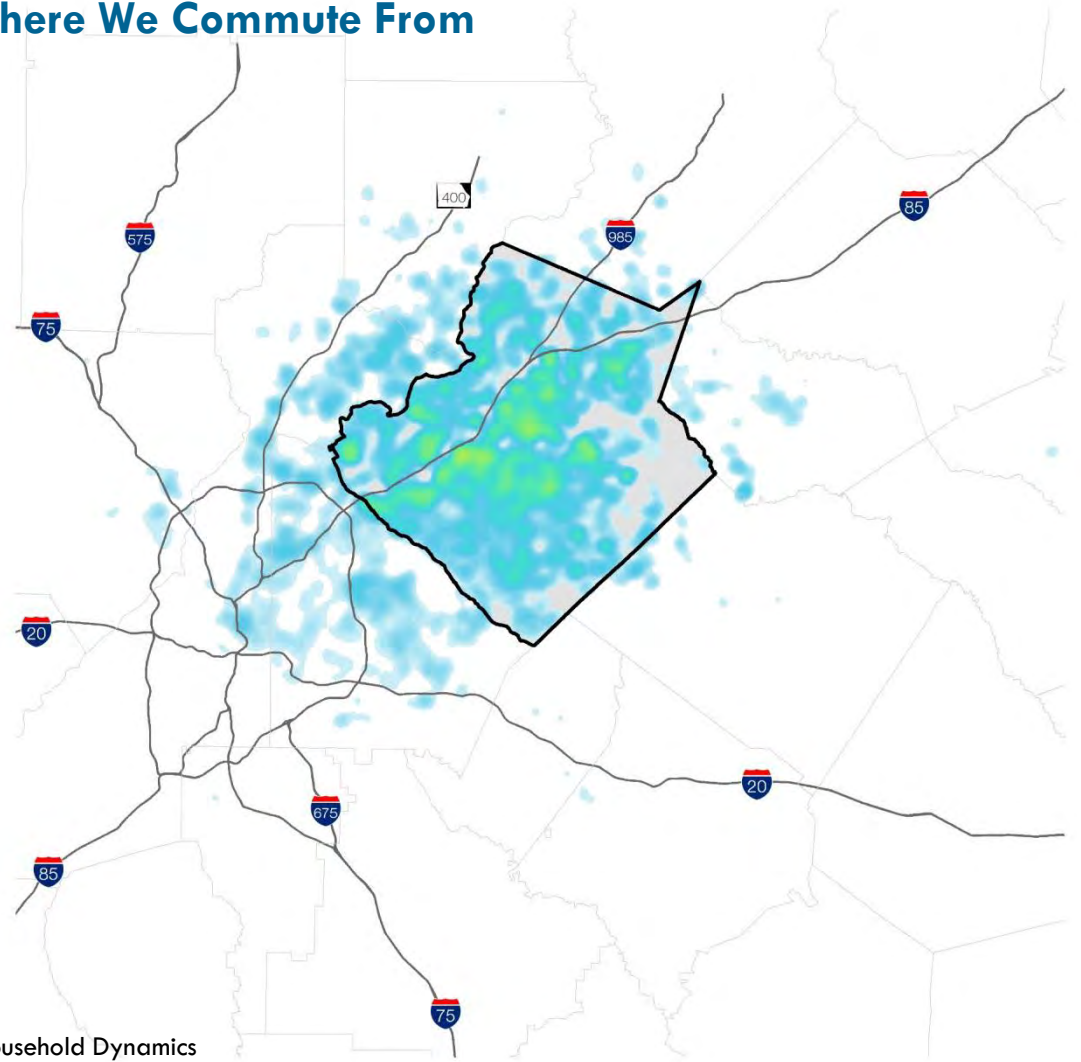
Source: Longitudinal Employer Household Dynamics

employment

Where We Commute To



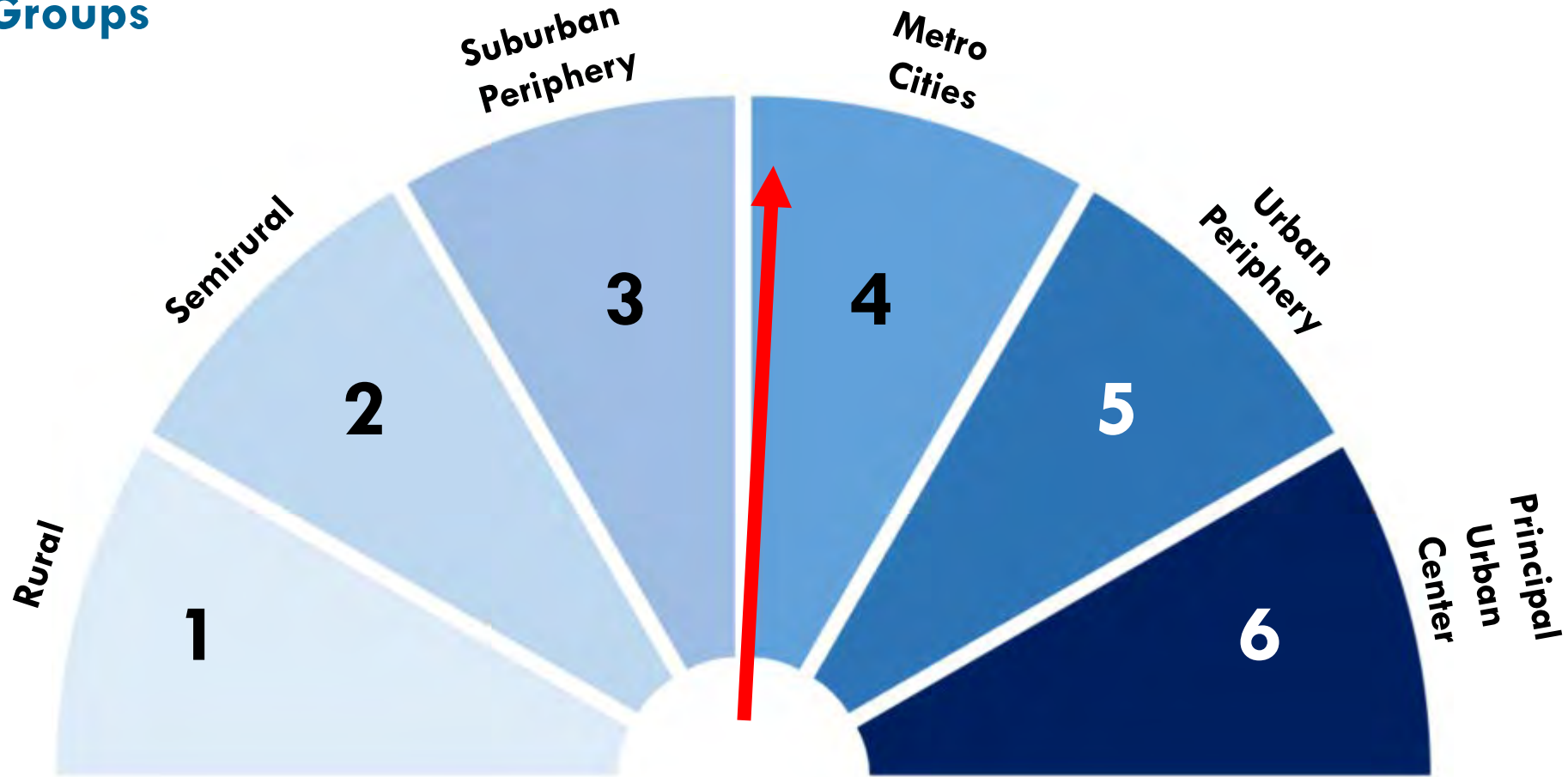
Where We Commute From



Source: Longitudinal Employer Household Dynamics

attitude & values

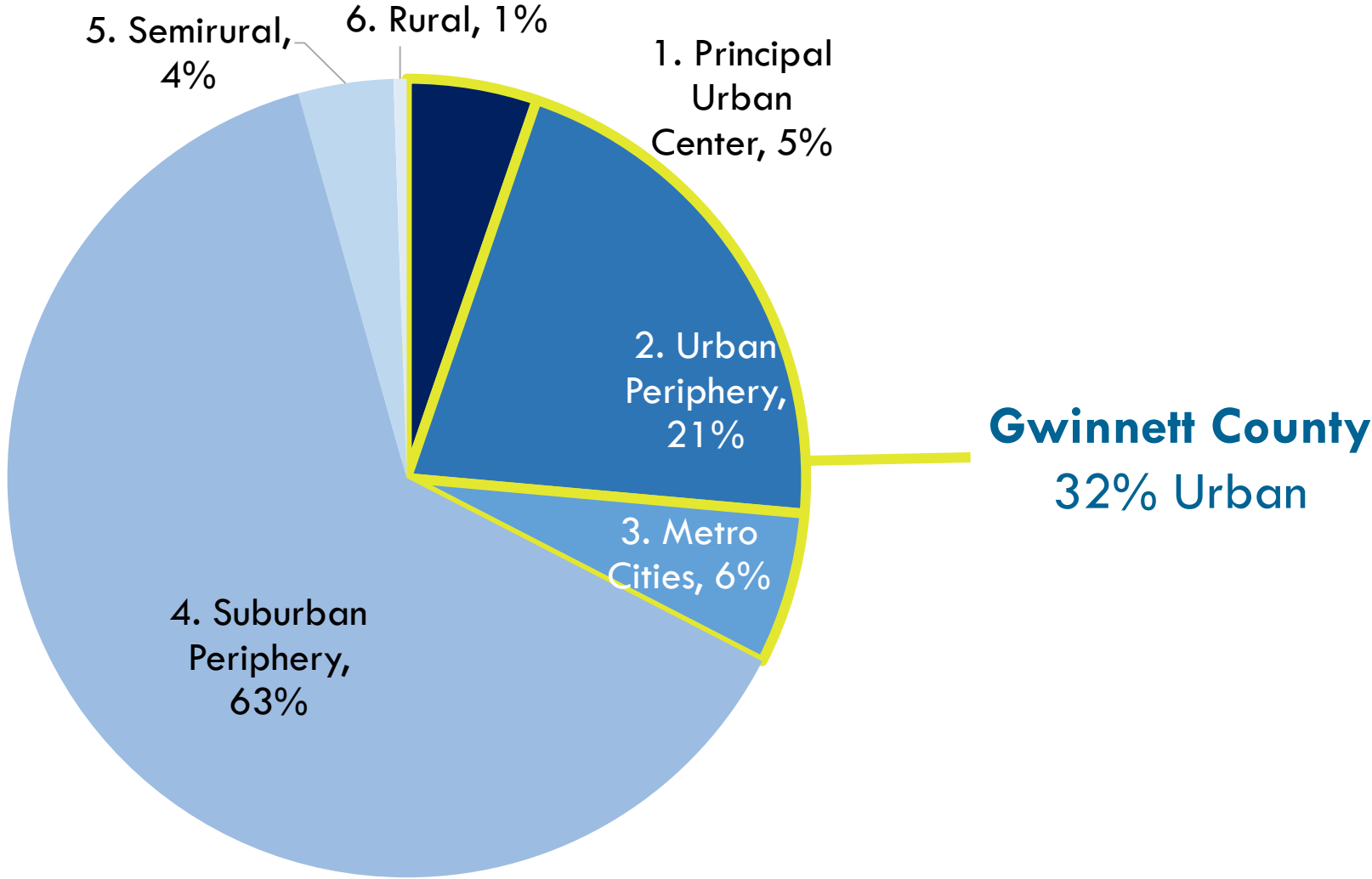
Urbanization Groups



Gwinnett County: 3.6

attitude & values

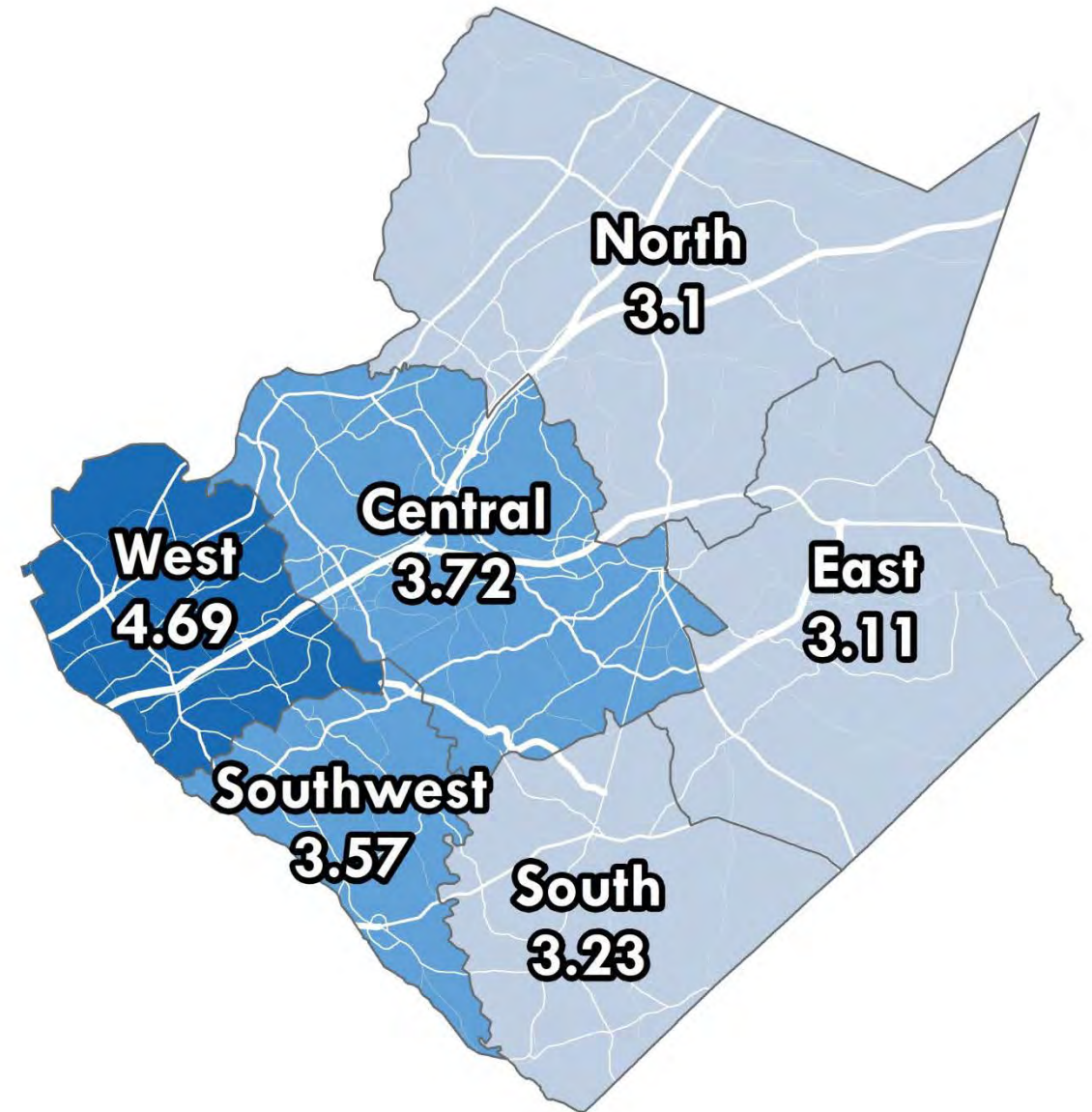
Urbanization Groups



Source: ESRI Tapestry Segmentation

attitude & values

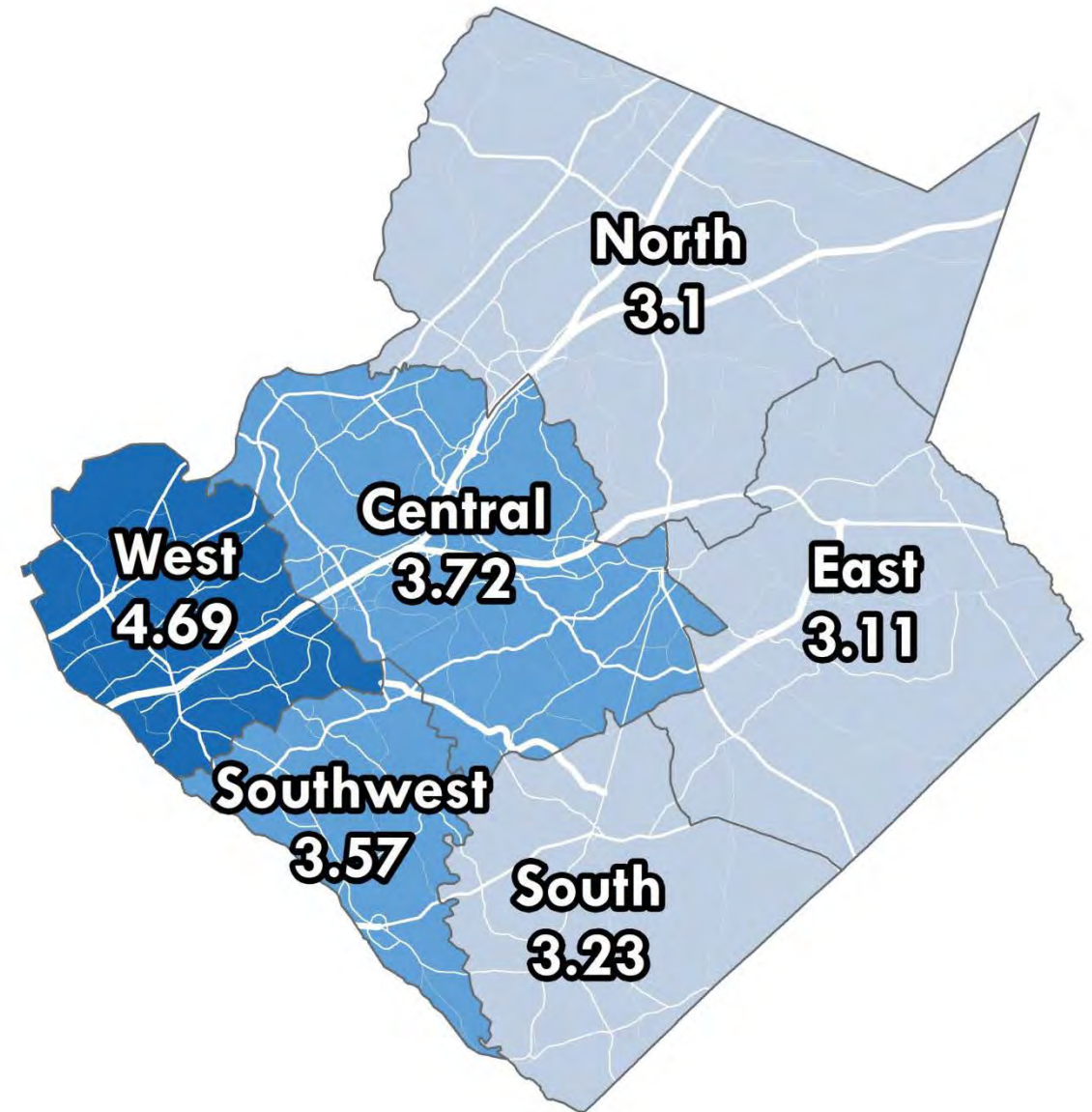
75% of West households are in the three most Urban tapestry categories



attitude & values

75% of West households are in the three most Urban tapestry categories

Just 7% of East households are in the three most Urban tapestry categories





community
engagement


community engagement



get the word out.

community engagement


get the word out.





 **Gwinnett 2040 Unified Plan** Published by Eric Lusher [?] · January 16 ·


We are pleased to announce the first round of Community Open Houses for the Gwinnett 2040 Unified Plan! Come learn more about the content of the Unified Plan, sign up to be a "Unified Plan Ambassador," and participate in hands on activities at the Vision Station, Big Idea Station, and Plan the Future Station.


All open houses will take place from 5:00 PM – 7:00 PM, so you can stop by at your convenience. We hope to see you at the meeting in your community!

- Thursday, January 25th – Five Forks Library, 2780 Five Forks Trickum Road, Lawrenceville
- Monday, January 29th – Dacula Library, 265 Dacula Road, Dacula
- Thursday, February 1st – Lilburn Activity Building, 788 Hillcrest Road, Lilburn
- Monday, February 12th – OneStop Centerville, 3025 Bethany Church Road, Snellville
- Thursday, February 22nd – Bogan Park, 2723 Bogan Road, Buford

 1,718 people reached [Boost Again](#)

 Like  Comment  Share 

 Ann Overman, Donald W. Heath and 100 others [Chronological](#)

 Gwinnett County Government

[Access Online Services](#)

Gwinnett 2040 Unified Plan

Planning and Development

- Organization
- Public Meetings
- 2040 Unified Plan**
- The Process
- Get Involved!
- Online Survey
- Living Room Chat
- Project Fact Sheet
- Contact Us

2030 Unified Plan

- News and Notices
- Contact Us
- Customer Service Survey
- Data and Maps
- Development Division
- Documents and Regulations
- Economic Development
- Environmental Sustainability
- FAQs
- Fees
- Flood Information
- Farms
- GIS Data Browser
- Land Development Activity
- Licensing and Revenue
- Online Services
- Pay Re-inspection Fees
- Planning Division
- Plan Review
- Request An Inspection
- Schedules
- Unified Development Ordinance

CONTACT US | A-Z INDEX | FAQ | SITE MAP | LOGIN


ABOUT GWINNETT | SERVICES | DEPARTMENTS | CALENDAR | NEWS | EMPLOYMENT | TOP LINKS

Sign up for our email newsletters!

Departments > Planning and Development > 2040 Unified Plan

Gwinnett 2040 Unified Plan

The Department of Planning & Development, in conjunction with consulting firm Pead & Company and its team of subconsultants, has begun preliminary work on the County's 2040 Unified Plan. The Georgia Department of Community Affairs requires all counties and cities in the state to have a comprehensive plan, which Gwinnett calls a "unified plan."



The purpose of the Unified Plan is to provide a road map of how the County's residents and other stakeholders want to see it grow and develop over the next 20 years. Please see below for other frequently asked questions regarding the development of the plan.

WHY does Gwinnett County need a Unified Plan?

- Required by the State and enables the County to receive various funds.
- An opportunity to review conditions in the community.
- An opportunity to anticipate future needs.
- An opportunity to establish short-term goals and a long-term vision to guide growth and development over the next 20+ years.

WHAT is addressed by the Unified Plan?

- Community Goals
- Needs & Opportunities
- Community Work Program
- Housing
- Transportation
- Economic Development
- Land Use

WHO provides input into the Unified Plan?

- Elected Officials
- Citizens
- Regulatory Agencies
- Planning Advisory Committee (PAC)
- Business & Community Leaders
- County Staff & Consultant Team

Help us shape the future

We want your feedback on the County's 2040 Unified Plan, which will contemplate how land use, transportation, housing, and economic development can combine and work together in the county.

Take a short online survey through May 11 to share your perception of Gwinnett and how you think Gwinnett should grow and develop over the next two decades.

gwinnettcounty

CONNECTION

a monthly publication of gwinnettcounty government

FEBRUARY 2018



Help shape the future of the county through the Gwinnett 2040 Unified Plan

community engagement



get the word out.



traditional engagement.

community engagement

traditional engagement



community engagement



get the word out.



traditional engagement.



non-traditional engagement.

community engagement

non-traditional engagement



step two
vision

vision development

- Timeline
- Policies
- Big Ideas



vision development

timeline



Attendees review planning and development oriented events from our history

Attendees tell us what they think will occur between now and 2040

vision development

policies

Attendees review 5 themes from previous Unified Plan

Policies are either:

- “still relevant”
- “no longer relevant”
- “need refinement”



opportunity for change analysis

change & preserve preferences

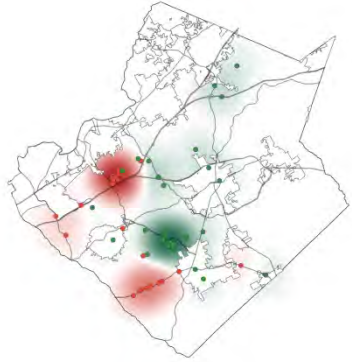
urban scale preferences

change & preserve likelihood

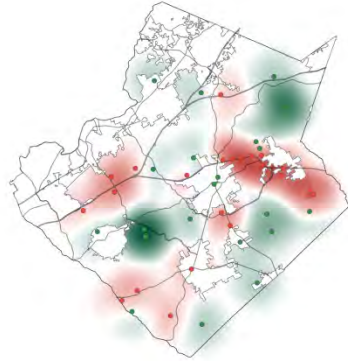
opportunity for change analysis

change & preserve preferences

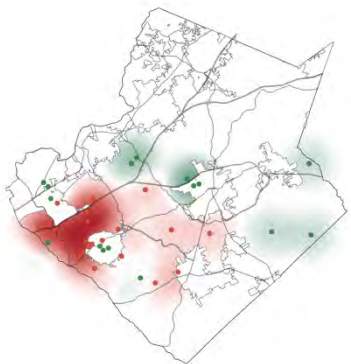
five forks library



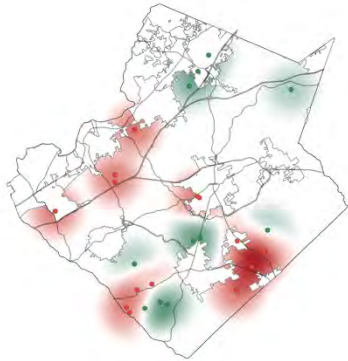
lilburn activity bldg.



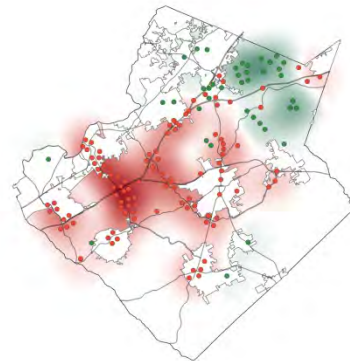
dacula library



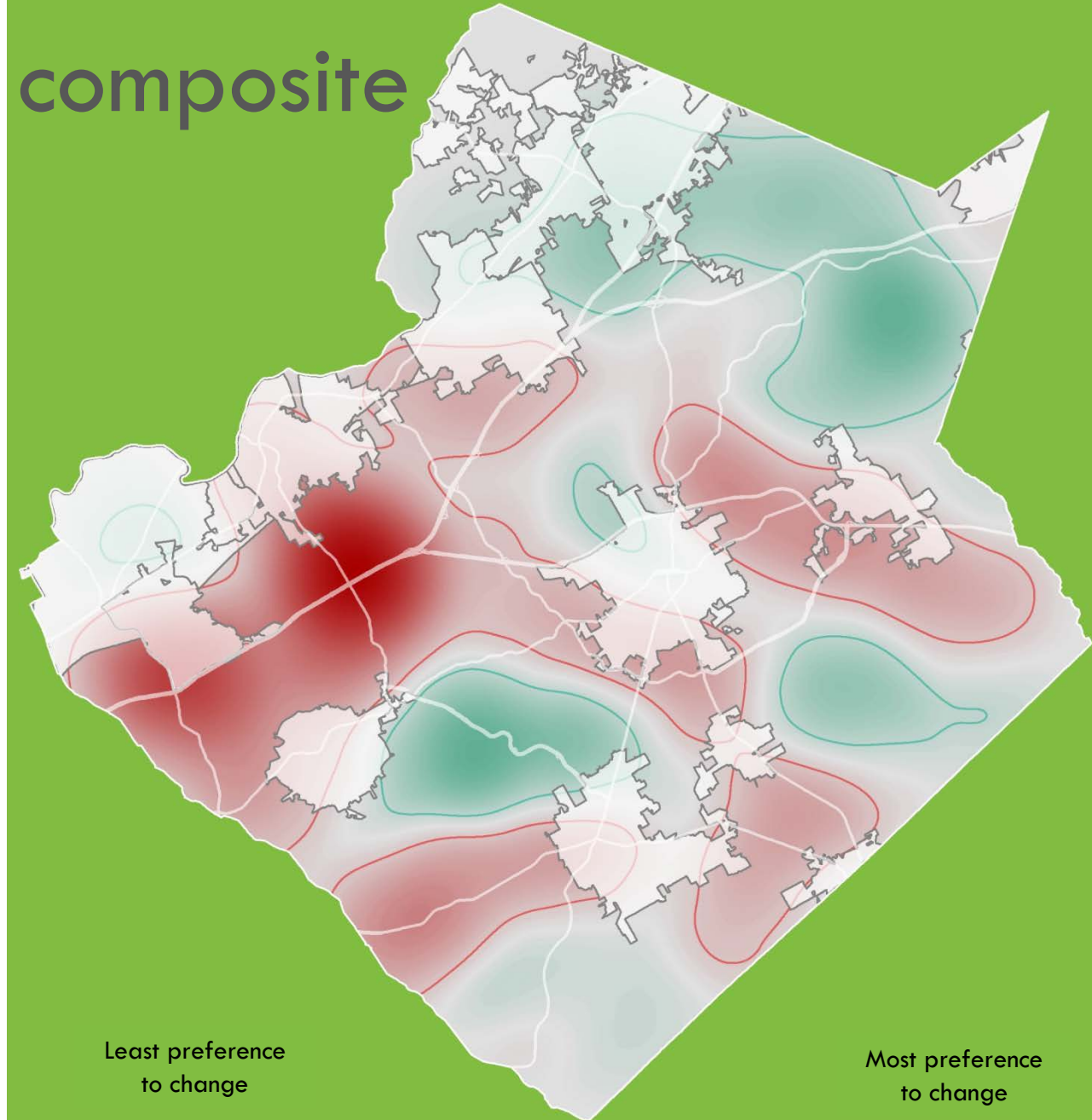
onestop centerville



bogan park



composite



Least preference
to change

Most preference
to change



opportunity for change analysis

urban scale preferences



1

Rural

2

Exurban

3

Suburban

4

**Community
Node**

5

**Urban
Center**



opportunity for change analysis

change & preserve preferences

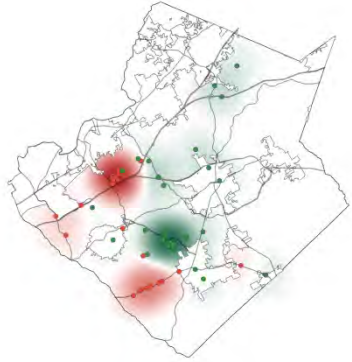
urban scale preferences

change & preserve likelihood

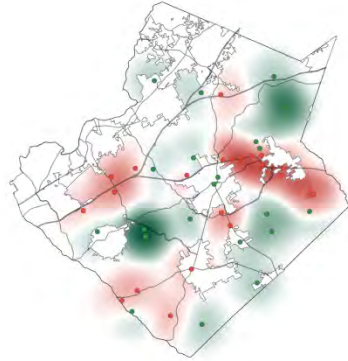
opportunity for change analysis

change & preserve preferences

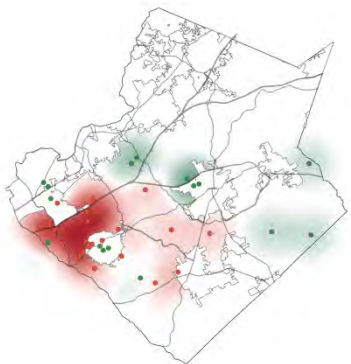
five forks library



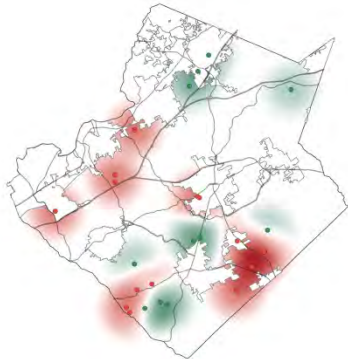
lilburn activity bldg.



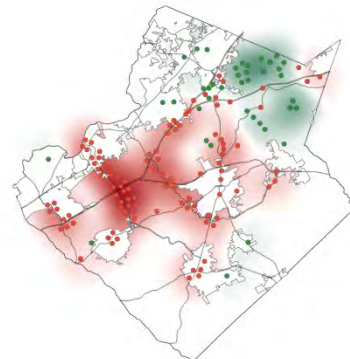
dacula library



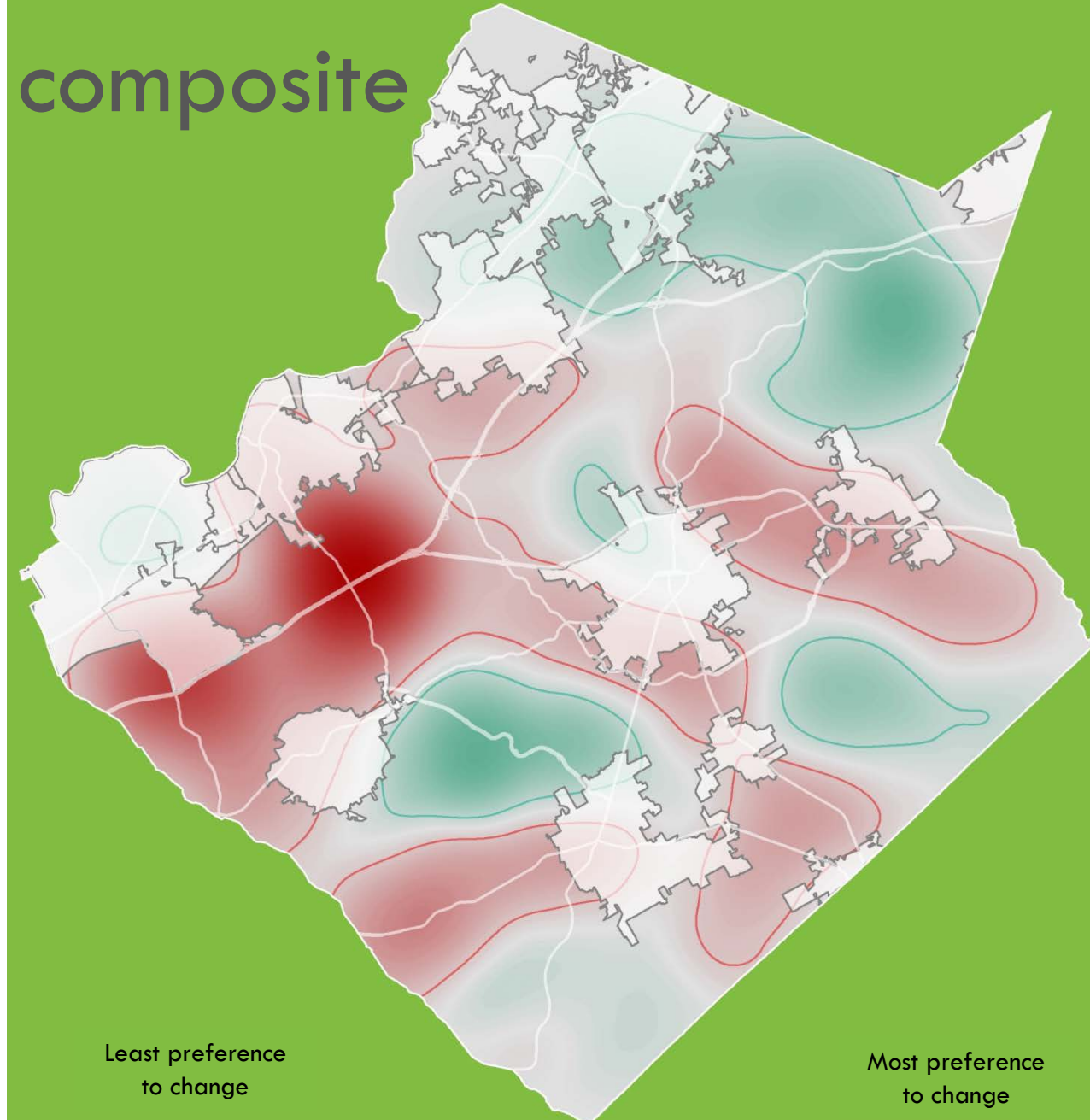
onestop centerville



bogan park



composite



Least preference
to change

Most preference
to change



change & preserve
likelihood

change & preserve likelihood

Infrastructure

sewer access

bike/ped suitability score

trail access and investments

transportation investments

Economic Development

Land value

Improvement to land value
ratio

Developer interest

Land Use & Housing

Retail concentrations

Owner occupancy of housing
units

Urbanity (from ESRI Tapestry
data)

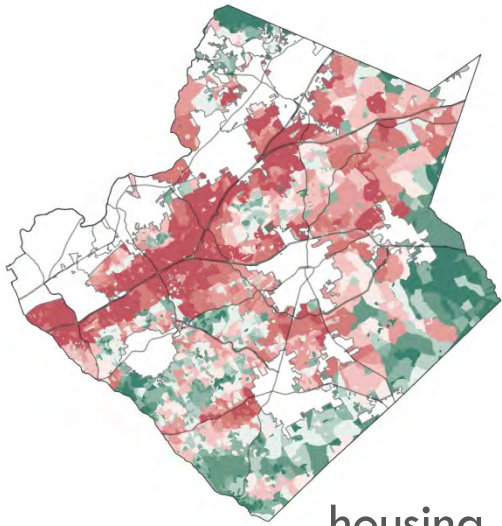
Sources include:



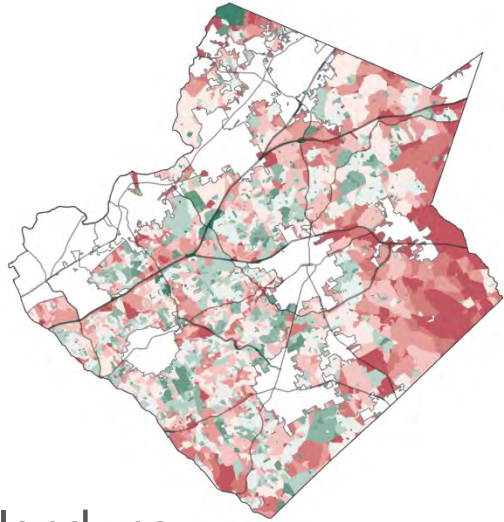
opportunity for change analysis

change & preserve likelihood

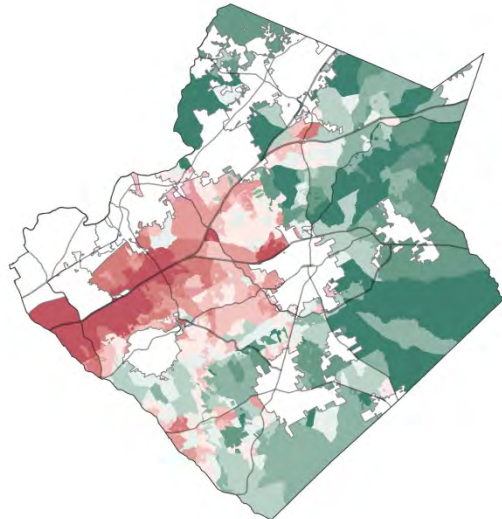
infrastructure



economic development



housing & land use

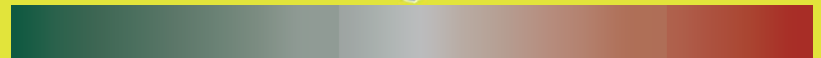


composite



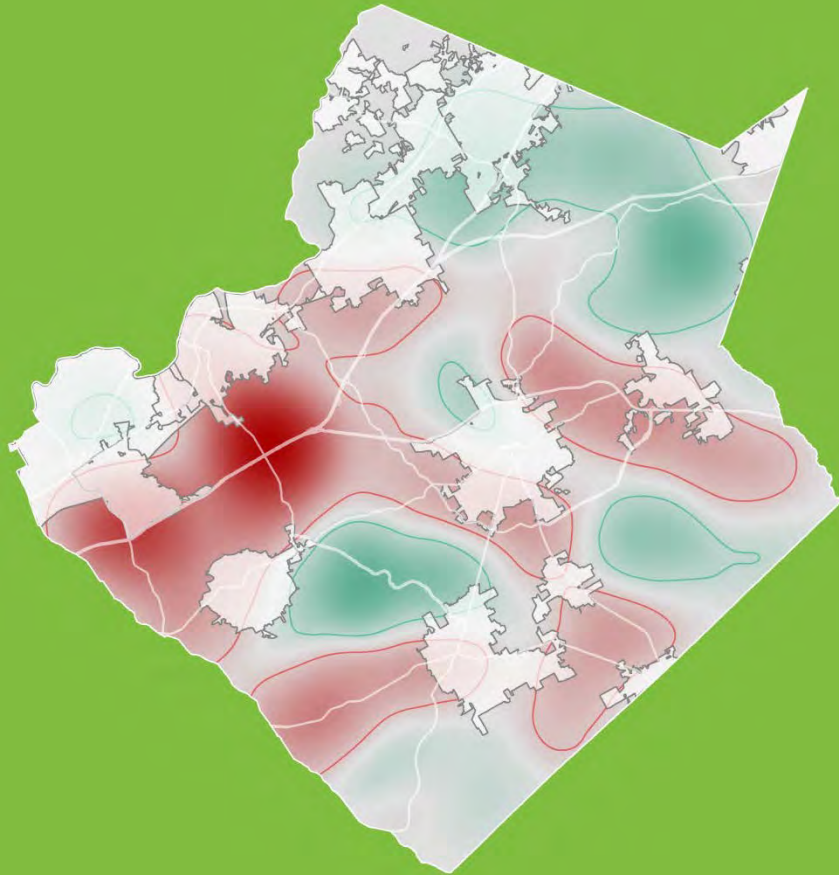
Least likely to
change

Most likely to
change

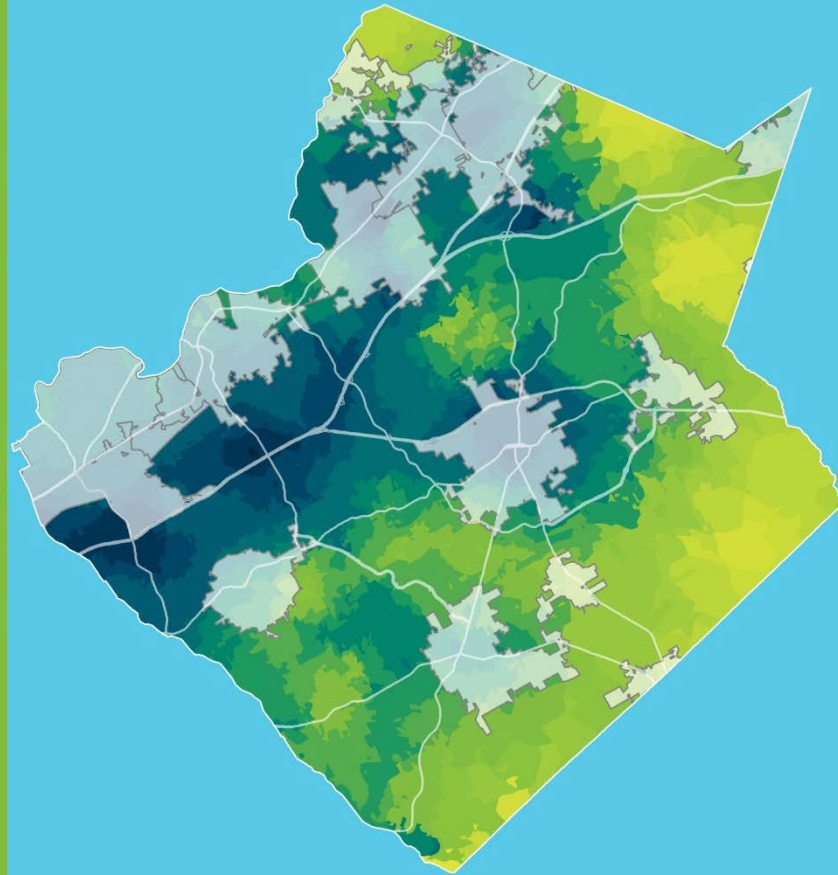


opportunity for change analysis

change & preserve preferences



urban scale preferences



change & preserve likelihood



next steps

step three

develop

spring 2018

step four

document

summer 2018

step five

adopt

fall 2018 – winter 2019

questions?